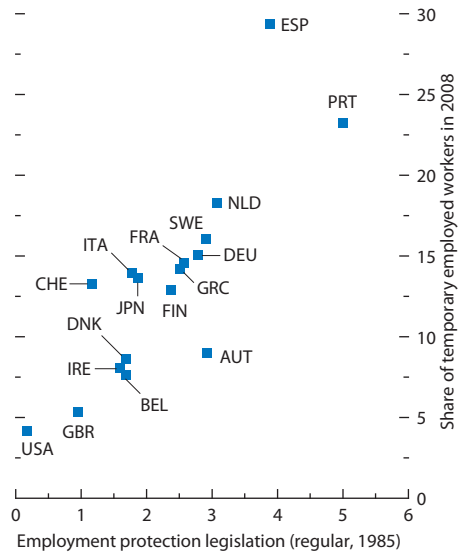


### Share of Temporary Workers and Employment Protection Legislation Index for Regular Contracts, 1985<sup>1</sup>



Sources: Organization for Economic Cooperation and Development, *Employment Outlook*; and IMF staff calculations.

<sup>1</sup> AUT: Austria; BEL: Belgium; DNK: Denmark; FIN: Finland; FRA: France; DEU: Germany; GRC: Greece; IRE: Ireland; ITA: Italy; JPN: Japan; NLD: Netherlands; PRT: Portugal; ESP: Spain; SWE: Sweden; CHE: Switzerland; GBR: United Kingdom; USA: United States.