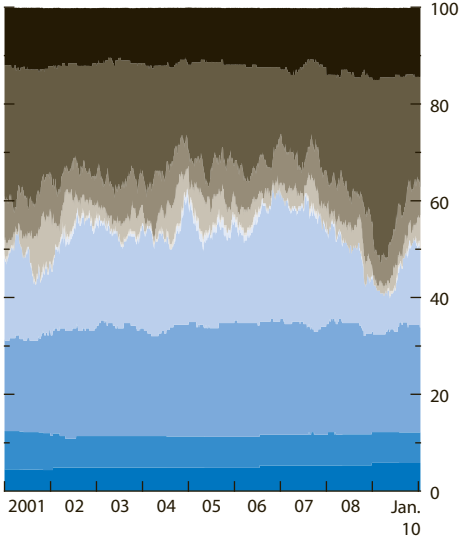


**Exchange Rate Regime Classifications,
2001–09**

(Percent)

- No separate legal tender
- Conventional peg
- Pegged exchange rate within horizontal bands
- Crawl-like
- Floating
- Currency board
- Stabilized
- Crawling peg
- Other managed
- Free floating



Source: IMF, *Annual Report on Exchange Arrangements and Exchange Restrictions*.