

# IMF Working Paper

---

## Mind the Gap: What is the Best Measure of Slack in the Euro Area?

*Kevin Ross and Angel Ubide*

**IMF Working Paper**

European I Department

**Mind the Gap: What is the Best Measure of Slack in the Euro Area?**

Prepared by Kevin Ross and Angel Ubide<sup>1</sup>

Authorized for distribution by Michael Depler

December 2001

**Abstract**

The views expressed in this Working Paper are those of the author(s) and do not necessarily represent those of the IMF or IMF policy. Working Papers describe research in progress by the author(s) and are published to elicit comments and to further debate.
---

Assessing the magnitude of the output gap is critical to achieving an optimal policy mix. Unfortunately, the gap is an unobservable variable, which, in practice, has been estimated in a variety of ways, depending on the preferences of the modeler. This model selection problem leads to a substantial degree of uncertainty regarding the magnitude of the output gap, which can reduce its usefulness as a policy tool. To overcome this problem, in this paper we attempt to insert some discipline into this search by providing two metrics—inflation forecasting and business cycle dating—against which different options can be evaluated using aggregated euro-area GDP data. Our results suggest that Gali, Gertler, and López-Salido's (2001) inefficiency wedge performs best in inflation forecasting and production function methodology dominates in the prediction of turning points. If, however, a unique methodology must be selected, the quadratic trend delivers the best overall results.

JEL Classification Numbers: E31, E32, C22, C32

Keywords: Output gaps, unobservable components, business cycles

Author's E-Mail Address: [kross@imf.org](mailto:kross@imf.org); [angel.ubide@tudor.com](mailto:angel.ubide@tudor.com)

---

<sup>1</sup> European I Department, IMF and Tudor Investment Corporation, respectively. We would like to thank Alessandro Zanello, Albert Jaeger, Zenon Kontolemis, Mads Kieler, and Manuel Martins for useful comments. All remaining errors are our own.

	Contents	Page
I.	Introduction.....	3
II.	Methodologies for the Estimation of the Output Gap.....	4
	A. Based on Statistical Properties .....	5
	B. Based on Economic Properties.....	6
	C. Based on Survey Data .....	10
	D. Based on “Thick” Estimates .....	11
III.	Data and Estimates of Slack .....	11
IV.	Assessment Criteria .....	12
	A. Dating Euro-Area Business Cycle .....	12
	B. Rules for Dating Output Gaps.....	12
	C. Inflation Performance Criteria .....	13
V.	The Results.....	14
	A. Dating of Business Cycles .....	14
	B. Inflation Forecasting .....	15
	C. Summary of the Results .....	16
VI.	Discussion and Conclusions .....	16
Tables		
1.	Output Gaps and Potential Growth Rates in 2000 from Different Methods.....	20
2.	Chronology of Euro Area Business Cycles .....	21
3.	Business Cycle Statistics for the Euro Area Under Various Detrending Methods....	22
4.	Theil U Statistics from Philips Curve Forecasting Exercise Using Equation 10a.....	24
5.	Theil U Statistics from Philips Curve Forecasting Exercise Using Equation 10b.....	26
6.	Theil U Statistics from Philips Curve Forecasting Exercise Using Equation 10c.....	28
Figures		
1.	Euro-Area Output Gaps .....	30
2.	Minimum-Maximum Values Across Euro Area Output Gaps .....	31
3.	Inflation Series Used in the Forecasting Exercise .....	32
4.	Performance of Slack Measures Under the Two Metrics .....	33
Appendices		
	Appendix I. Three Methodologies to Date the Euro-Area Business Cycle .....	18
	References.....	34

## I. INTRODUCTION

Recent economic developments have shown the importance of assessing the magnitude of the output gap in order to achieve a correct policy mix. The current discussion on the stance of fiscal policy in the Euro area relies on the achievement of structural balance, the nominal balance adjusted for the output gap, over the medium term. Whether the current fiscal deterioration is due only to the play of automatic stabilizers or the result of discretionary fiscal stimulus cannot be resolved without an assessment of the magnitude of the output gap. In fact, the European Commission has just published a paper with detailed guidelines for the calculation of output gaps and structural balances<sup>2</sup>, which will be used in the assessment of stability programs. Critics of the recent stance of monetary policy in the United States blame the Federal Reserve for having mistaken a widening output gap for an increase in potential output, a mistake that led, according to these critics, to the need to tighten policy too fast and resulted in the abrupt slowdown of late 2000 and 2001. Other examples abound. The increasing variability of the output gap has been blamed, for example, for the Federal Reserve's policy miscues which led to the stagflation in the 70s. Also, the failure to correctly identify turning points has resulted, in many instances, in pro-cyclical fiscal policies. This evidence, together with the widespread adoption of inflation targeting frameworks that rely on output gap measures (see Svensson (1999) and Clarida, Gertler, and Gali (2000)), has spurred a recent surge in research related to the measurement of the output gap (see, among many others, Camba-Mendez and Rodriguez-Palenzuela (2001), Martins (2001), and Mestre and Fabiani (2001)).

The problem encountered by policy makers is that the output gap is the distance between potential and actual output, and potential output is not directly observable. Thus, multiple different methods have been developed to estimate the output gap, which encompass three different approaches: identification based on statistical properties of the GDP series, identification based on economic theory, and identification based on survey data. These different approaches can also be combined into "thick estimates" a la Granger (2000) that combine the information embedded into the different models.

However, since all of these methodologies rely on different assumptions for identification, they are bound to deliver divergent results and can be considered as "different windows through which economists can examine their models and data" (Canova (1998)). Thus, the selection of the methodology has to be based on the preferences of the researcher and on the question being investigated, and it is open to considerable discretion. A way to eliminate this discretion is to provide a metric against which to measure the different options, in order to select the "best" measure and minimize the subsequent error in the determination of the policy stance.

This paper, after showing how largely uninformative the output gap is unless there is an objective selection criterion across methodologies, attempts to carry out such an exercise for the

---

<sup>2</sup> See Economic Policy Committee (2001), "Report on Potential Output and the Output Gap," October.

euro area, by calculating the output gap using several difference approaches and assessing their performance according to two metrics: the ability to forecast turning points, and the ability to forecast inflation. These metrics combine the desirable properties of minimizing the risk of procyclical policies and maximizing the scope for inflation stabilization. Because of the absence of an official chronology of the euro area business cycle, we provide a dating of turning points for the level of real GDP and then assess the accuracy of turning point forecasting using three alternative methods. As for inflation forecasting, we conduct a simulated forecasting exercise, whereby a simulated series is constructed of the forecast of inflation that a model would have produced had it been used historically to generate a forecast of inflation. The results are then compared to a naive (no change) forecast. Our paper relates to the work performed for the United States by Canova (1999), Stock and Watson (1999), and Atkeson and Ohanian (2001), and by Camba-Mendez and Rodriguez-Valenzuela (2001) for the euro area.

The results show the wide range of estimates that different methodologies deliver, which add to the already large uncertainty inherent in the stochastic nature of these calculations. As for the best measure of the output gap, our results suggest that Gali, Gertler, and López-Salido's (2001) inefficiency wedge performs best in inflation forecasting and the production function methodology dominates in the prediction of turning points. If, however, a unique methodology must be selected, the quadratic trend delivers the best overall results.

The rest of the paper is organized as follows: section II briefly presents the different methodologies for the estimation of the output gap; section III discusses the performance criteria used in the paper and the results of its application to the different measures of the output gap; Section IV discussed the results and presents some conclusions.

## II. METHODOLOGIES FOR THE ESTIMATION OF THE OUTPUT GAP<sup>3</sup>

The concept of economic slack derives from the assumption that there is a potential level of output that can be achieved given the resources available in the economy. This potential level of output is, by definition, unobservable, and therefore indirect methods have been devised to extract this unobserved variable from the observed output series. There are three broad approaches to the estimation of the amount of available economic slack: identification based on the statistical properties of the GDP series, identification based on economic theory, and identification based on survey data. These different alternatives can then be used in isolation or combined to create "thick" estimates a la Granger (2000). Given that the nature of the paper is to discuss the properties of alternative methods that can be used in practical macroeconomic surveillance, for each of the three categories mentioned above we have selected methodologies that are easily replicable and widely available in standard econometric packages. In this spirit,

---

<sup>3</sup> Throughout the paper we will use the term "output gap" as a generic term for the different measures of slack identified, even if in some cases, such as consumer confidence, the measures may have no direct relationship to potential output.

other less popular methodologies, such as the Beveridge-Nelson decomposition, Wavelet filters, or multivariate common trends, have been excluded from the analysis.<sup>4</sup>

### A. Based on Statistical Properties

GDP can be characterized as a cycle that evolves around a long term trend. Thus, identification based on the statistical properties of the unobserved components amounts to defining the main features of the trend and cycle (such as order and type of integration of the trend, and length or periodicity of the cycle) and the relationship between trend and cycle. There are several approaches depending on these hypotheses: some define cycle and trend according to their statistical properties and the relationship between trend and cycle (linear and quadratic trends, first order differences), others use an identification procedure based on the definition of cycle (Hodrick-Prescott, frequency domain filters). Throughout the paper we will denote the natural logarithm of the time series at  $y_t$ , its trend as  $x_t$  and its cyclical component as  $c_t$ .

The simplest procedure is linear (LT) and quadratic (QT) detrending, where it is assumed that  $x_t$  is a deterministic process which can be approximated by a polynomial function of time and that  $x_t$  and  $c_t$  are uncorrelated.

The Hodrick-Prescott filter is widely used among applied macroeconomists because of its simplicity and its ability to replicate NBER turning points in U.S. GDP (see Canova 1999). Identification is achieved by assigning the business cycle a periodicity of 2-8 years, and defining a smooth but variable stochastic trend that is uncorrelated with  $c_t$ . We use the standard value of lambda equal to 1600 as the smoothing parameter (HP1600). Given the traditional criticism to the crude application of the HP filter<sup>5</sup>, a modified versions of this filter is calculated, the HP-Arima (Maravall and Kaiser (2000)), that suggests forecasting and backcasting the series with an Arima model to minimize the end-of-sample problem inherent to this filter (HPA1600). However, the choice of the smoothing parameter amounts to identifying the allocation of variations in output to the trend and to the cyclical component. To give robustness to the analysis, we will therefore use two additional alternatives introduced by Marcet and Ravn (2001), who suggests calculating the value of lambda in a cross-country setting so as to equalize the volatility of the trend across countries. We will use the United States as the benchmark. They propose two methods: allowing for a larger variability of the growth rate in countries with a more volatile cyclical component, which yielded a lambda of 3,137 (HP3137); and assuming

---

<sup>4</sup> For a discussion on the use of wavelet filters, see Scacciavillani and Swagel (1999). See Canova (1998) on the use of the Beveridge-Nelson decomposition.

<sup>5</sup> See Maravall (1996), Cogley and Nason (1995), Harvey and Jaeger (1993).

similar economic structures between the benchmark and the comparator country, which yielded a lambda of 893 (HP893).<sup>6</sup>

Frequency domain filters assume that  $c_t$  and  $x_t$  are independent, that  $x_t$  has the power concentrated in the low frequency band of the spectrum, and that the power of the secular component decays rapidly away from zero. Baxter and King (1999) provide a time dimension version of this filter (BK). Here, the results are presented for the case where the cycles have a length of less than 32 quarters.

### **B. Based on Economic Properties**

A typical criticism of the statistical or “atheoretical” methods is that the implicit output trend does not necessarily coincide with the definition of potential output, namely the maximum utilization of resources that is compatible with price stability.

Economic identification can be achieved in two main ways. The first one is using economic theory to statistically identify the trend. A widely used methodology is that of Blanchard and Quah (1989) (BQ), which uses the definition of supply and demand shocks in a bivariate structural VAR to identify potential output. The crucial assumption is that demand shocks have no long run effect on output and unemployment but supply shocks have long run effects on output.

The second procedure is estimating the variables using reduced-form equations derived from economic models. Perhaps the most common approach is the direct estimation of a (typically Cobb-Douglas) production function where the parameters are calibrated to match the specifications of the economy under study (see, for example, McMorrow and Roeger (2001)). An alternative method is the estimation of Phillips curves (see, among others, Staiger, Stock, Watson (1997)). Because of the long standing debate about the validity of the standard Phillips curve as a macroeconomic tool, we will use two recent innovations in this area. The first one tries to exploit the intrinsic economic relationship between potential output and the NAIRU by estimating a system of equations that explicitly incorporates the covariation restrictions on cyclical output and cyclical unemployment, while taking into account the available information on inflation (see, Apel and Jansson (1999a, 1999b)). Such simultaneous estimation technique arrives at the desired joint labor- and goods-market assessment of how far the economy is from the levels of output and labor utilization that are consistent with stable inflation. The second approach stems from the New Phillips Curve literature (see Goodfriend and King (1997) for a survey) and has been developed empirically by Gali, Gertler and López-Salido (GGL) (2001)).

---

<sup>6</sup> These divergent smoothing parameters indicate that the volatility of the trend and cycle in the euro area were both lower than in the United States. However, within the euro area the volatility of the cycle dominated the variance of the acceleration in the trend.

## Blanchard-Quah

Blanchard and Quah (1989) (BQ) propose an identification where, in a bivariate structural VAR of output and unemployment, supply shocks have long run effects on output but not on unemployment and demand shocks have no long run effects on either output or unemployment. The implied trend-cycle decomposition assumes that trend and cycle are uncorrelated.

## Based on the Production Function

Potential GDP may be estimated using a production function approach.<sup>7</sup> Aggregate production takes a Cobb-Douglas form with constant returns to scale and neutral technical progress. Potential output is then defined as:

$$y_t = (1 - \beta)l_t + \beta k_{t-1} + tfp \quad (1)$$

where  $l_t$  is the log of the level of employment consistent with the unemployment being at the Nairu,  $k_{t-1}$  is the one period lag of the log of the capital stock,  $tfp$  is trend total factor productivity,  $\beta$  is the share of capital in value added, and  $(1 - \beta)$  is the average wage share. The Nairu consistent level of employment is defined by:

$$l_t = lf_t * (1 - U_t^n) \quad (2)$$

where  $lf_t$  is the labor force and  $U_t^n$  is a time-varying Nairu.<sup>8</sup> The evolution of the capital stock is defined as:

$$k_t = (1 - \delta) * k_t + inv_t \quad (3)$$

---

<sup>7</sup>This methodology, although useful to disentangle the contribution of labor, capital, and productivity to potential output growth, presents two important shortcomings: it crucially depends on assumptions about parameters (such as the labor share), and requires some of the variables to be previously detrended, thus being subject to the standard criticisms about detrending methods. In fact, one could interpret the estimation of potential output with the production function approach as a special case of the HP filter, where the final result is a linear combination of HP filtered variables.

<sup>8</sup> We use the Nairu calculated by Fagan, Henry, and Mestre (2001) and extended to end-2000 with information from the unobservable components models. The level is estimated to be 8.7 percent at the end of the sample.



where  $\delta$  denotes a rate of depreciation and  $inv_t$  represents real gross investment. Total factor productivity is estimated as a Hodrick-Prescott filtered Solow residual. We calibrate the model as in the ECB's area-wide model (see Fagan, Henry, and Mestre 2001):  $\beta$  is set at 0.41 and  $\delta$  is set at one percent per quarter, or 4 percent per annum. Finally, the output gap is defined as the ratio of real GDP to potential GDP.

### Based on the Phillips Curve: Unobserved Components

Apel and Jansson (1999a and 1999b) propose a procedure for joint estimation of the unobserved potential output and NAIRU variables based on the standard Phillips curve. Formally, the model contains the following equations:

$$\Delta\pi_t = \sum_{i=1}^I \rho_i \Delta\pi_{t-i} + \sum_{j=0}^J \eta_j (u_{t-j} - u_{t-j}^n) + \sum_{k=0}^K \omega_k z_{t-k} + \varepsilon_t^{pc} \quad (4)$$

$$y_t - y_t^p = \sum_{i=1}^L \phi_i (u_{t-i} - u_{t-i}^n) + \varepsilon_t^{ol} \quad (5)$$

$$u_t^n = u_{t-1}^n + \varepsilon_t^n \quad (6)$$

$$y_t^p = \alpha + y_{t-1}^p + \varepsilon_t^p \quad (7)$$

$$u_t - u_t^n = \sum_{m=1}^M \delta_m (u_{t-m} - u_{t-m}^n) + \varepsilon_t^c \quad (8)$$

where  $\pi_t$  is the log difference of the CPI,  $u_t$  the unemployment rate,  $u_t^n$  the NAIRU,  $z_t$  exogenous (supply-shock) variables,  $y_t$  the log of real output, and  $y_t^p$  the log of potential output. All innovations in the system ( $\varepsilon_t^{pc}, \varepsilon_t^{ol}, \varepsilon_t^n, \varepsilon_t^p, \varepsilon_t^c$ ) are assumed to be i.i.d., mutually uncorrelated, with zero means and constant variances.

Equation (4) is a representation of the Gordon "triangle model" (Gordon 1997), whereby inflation is a function of inertia, demand, and supply, and embeds an expectation-augmented Phillips curve that controls for supply shocks. Equation (5) is a version of the Okun's Law, linking the cyclical components of output and unemployment.<sup>9</sup> In order to close the model it is necessary to make some assumptions about the stochastic characteristics of the unobserved variables. Equations (6) and (7) assume that both potential output and the NAIRU contain a stochastic trend, and equation (8) specifies the evolution of cyclical employment as an autoregressive distributed lag.

---

<sup>9</sup> Although this is the typical representation of the Okun's Law, one could argue that, from an empirical point of view, unemployment typically lags GDP, and therefore equation (2) should be reversed. The results of this exercise, not presented to save space, are broadly similar to the main specification of the model.

For purposes of estimation, the model is rewritten in state space form and the unknown parameters of the model and the time series of the unobservable components are found through application of the Kalman filter and maximum likelihood estimation (see Harvey (1991)).

Because this approach gives the modeler discretion regarding the underlying structure of potential output and the Nairu, four versions of this model will be estimated.<sup>10</sup> The first unobservable components model (UC1) is defined as above; the Nairu is assumed to follow a pure random walk, while potential output follows a random walk plus constant drift. The second model (UC2) is based on the empirical observation that, at least for certain samples, unemployment in the euro area can be characterized as an I(2) variable (see Camba-Mendez and Rodriguez-Palenzuela (2001)). Thus, the NAIRU and potential output are assumed to follow random walks with stochastic trends. This requires the addition of two stochastic trend terms to equations (3) and (4) defined as:

$$u_t^n = u_{t-1}^n + \xi_{t-1} + \varepsilon_t^n \quad (6a)$$

$$\xi_t = \xi_{t-1} + \varepsilon_t^\xi \quad (6b)$$

$$y_t^p = y_{t-1}^p + \beta_{t-1} + \varepsilon_t^p \quad (7a)$$

$$\beta_t = \beta_{t-1} + \varepsilon_t^\beta \quad (7b)$$

The third model (UC3), which traces its lineage to Jaeger and Parkinson's (1994) work on hysteresis effects, allows lagged cyclical unemployment in equation (5) to affect the current natural rate as shown in equation (3c).

$$u_t^n = u_{t-1}^n + \theta_1(u_{t-1} - u_{t-1}^n) + \varepsilon_t^n \quad (6c)$$

The coefficient  $\theta$  measures the degree of hysteresis in the unemployment rate series.<sup>11</sup> The final model (UC4) is derived from Martins (2001), who models the NAIRU as a random walk with a stochastic trend and potential output as a random walk with a constant drift. Thus, UC4 replaces equation 3 with (6a) and (6b) and equation 4 with

$$y_t^p = y_{t-1}^p + g + \varepsilon_t^p \quad (7c).$$

---

<sup>10</sup> All models were estimated with four lags of inflation and a set of supply shocks including oil prices, real effective exchange rates, import prices and relative productivity differentials. In addition, a dummy variable for the start of EMU was included.

<sup>11</sup> The estimate for  $\theta$  in different specifications was around 0.35, suggesting that a one percent increase in cyclical unemployment leads to a permanent increase of actual unemployment of about 0.35 percent. This is slightly less than double the estimate found by Jaeger and Parkinson (1994) for Germany alone.

### Based on the Phillips Curve: GGL's "Inefficiency Wedge"

In their examination of inflation dynamics in the euro area, GGL (2001) argue that, in the context of the New Keynesian Phillips curve, real marginal cost and not the output gap, are the theoretically correct measure of real sector inflationary pressures. In their view, real marginal costs tend to move rather sluggishly through the cycle, (in line with the evidence of persistence in inflation), as labor market frictions and wage rigidities prohibit correct market clearing processes. Detrended measures of output, however, generally lack this sluggishness (since they do not encompass these labor market imperfections) and cannot account for the influence of productivity and wage pressures on inflation.

In GGL (2001) log real marginal ( $mc_t$ ) can be decomposed into two parts:

$$mc_t = \mu_t^w + [(c_t + \varphi n_t) - (y_t - n_t)] \quad (9)$$

(i) a gross wage markup ( $\mu_t^w$ ) which measures the degree of frictions or imperfections in the labor market, and (ii) an inefficiency wedge  $[(c_t + \varphi n_t) - (y_t - n_t)]$ , where  $c_t$  is log of non-durable consumption,  $n_t$  is log employment per household,  $y_t$  is the log of real output, and the parameter  $\varphi$  represents the inverse of labor supply. Theoretically, the inefficiency wedge (IW) is simply the ratio of a household's marginal cost of supplying labor to its marginal product of labor, and measures the current level of output in relation to the efficient level of output. Empirically, as in GGL, the inefficiency wedge can easily be calculated from euro-area data on real consumption, real output, employment and the labor force.<sup>12</sup>

### C. Based on Survey Data

An alternative to the estimation of the output gap is survey-based measures of economic slack. The three most important are the measure of capacity utilization in industry (CU), and the indices of consumer (CC) and business confidence (BC). All three indices are transformed by normalizing them with their respective means and standard deviations. Because of data availability, we use a GDP weighted average of survey data series from four core countries (Germany, France, Italy, and Spain) until 1985 and Eurostat data for the euro area thereafter.

---

<sup>12</sup> As in GGL, we assume the inverse of the elasticity of labor supply ( $\varphi$ ) is equal to one ; employment per household  $n_t$ , is calculated as the log difference between employment and the labor force; and that total consumption can be used in the place of non-durable consumption  $c_t$ . As calculated, the inefficiency wedge is always negative since  $[(c_t + \varphi n_t) - (y_t - n_t)] = c_t - y_t + 2n_t$ ,  $c$  is always less than  $y$ , and  $n$  is negative as well given that employment is less than the total labor force. We take the calculated wedge and subtract its average over the 1970-2000 period.

#### **D. Based on “Thick” Estimates**

In the process of selecting the best goodness of fit, researchers often choose amongst different variables until they find the one that best suits their needs. However, Granger (2000) suggests that, by discarding sub-optimal specifications, a wealth of valuable information is ignored, and several reasons suggest that this may not be a good practice. For example, as Granger (2000) indicates, a combination of forecasts is often superior to the best forecast, in a fashion similar to the well-known finance axiom that investing in a portfolio of assets is usually superior to investing in a single asset. Thus, many alternative specifications of similar quality are then combined into a single output. Three different “thick” estimates are presented in this paper: the unweighted mean (MEAN); the weighted mean (where the weights are the inverse of the standard deviation) (WMEAN); and the median (MEDIAN).

### **III. DATA AND ESTIMATES OF SLACK**

Quarterly data (1970Q1 to 2000Q4) on real GDP, unemployment, and consumer prices was taken from OECD and IFS databases and euro-area aggregates constructed based upon PPP weights of euro area countries. Where applicable, a similar procedure was undertaken to create the supply shock variables used in the unobservable component models as well as the inefficiency wedge variable. To ensure compatibility, in all cases we compared the data to those found in the ECB’s area wide model database (see Fagan, Henry, and Mestre (2001)) and to harmonized data from Eurostat.

The four panels of Figure 1 show the output gap estimates under each methodology. Table 1 contains output gap as well as potential GDP estimates from each of the models in 2000. Two results stand out. First, the wide dispersion of estimates: estimates of the rate of growth of potential output in 2000 vary between 2.1 percent and 3.4 percent, while the estimates of the output gap for 2000 range from -4.6 percent to 2.2 percent. Second, this dispersion occurs even within estimates that follow similar methodologies: for example, output gap measures with the unobserved components methodology range from -4.6 percent to 1.5 percent. To further illustrate this point, we plot in Figure 2 the bands resulting from taking the maximum and minimum values over all gap estimates for every point in time. Up to 1992 the bands are rather symmetric, and only in a few periods in the early 1980s it can be argued that the output gap was unambiguously negative. After 1992 the dispersion widens, and no conclusion can be drawn on whether the output gap was positive or negative or even whether it was widening or narrowing.

Thus, the menu of available methodologies adds a considerable amount of uncertainty to the estimation of the output gap, in addition to the uncertainty involved in the estimation of any particular model—an issue consciously ignored in this paper.<sup>13</sup> This makes the need to have an

---

<sup>13</sup> Several researchers, including Staiger, Stock and Watson (1997) for the U.S. and Martins (2001) for the euro area, have calculated standard errors for some of these estimates of the output gap, and report error bands of up to one percentage point. Martins (2001) argues for  
(continued...)

objective criterion for the selection of a specific methodology crucial for the achievement of the right policy mix. We tackle this problem in the remainder of the paper.

#### IV. ASSESSMENT CRITERIA

##### A. Dating the Euro Area Business Cycle

There is no official or generally agreed business cycle chronology for the euro area. For the US the NBER dates peaks and troughs, and the corresponding cycles, representing periods of expansion and contraction in the level of activity, have become known as classical business cycles. Bry and Boschan (1971) developed a mechanical method to emulate the NBER dating using a univariate method, and versions of it have been used on individual or groups of economies by King and Watson (1994), Watson (1994), Artis, Kontolemis, and Osborn (1997), Artis, Krolzig, and Toro (1999), among others.

To the best of our knowledge, no attempt has been made to date an euro-area business cycle using aggregate area-wide data.<sup>14</sup> Therefore, we will apply a simplified version of the Bry-Boschan (BB) procedure on euro area GDP data to create a unique reference cycle for the euro area. We use the set of BB turning points as a reference to assess the dating performance of the different measures of the output gap found under the various detrending procedures. To ensure robustness and for comparison purposes, we will also use the dating obtained by Artis, Kontolemis, and Osborn (AKO) using industrial production data and by Artis, Krolzig and Toro (AKT) using a multi-country approach. The reference cycle dates emanating from both the AKO and AKT methods are broadly similar to our results using a euro-area aggregate real GDP series under the BB procedure (Table 2). Appendix I provides a detailed description of the three dating methodologies.

##### B. Rules for Dating Output Gaps

The procedure used to date the different measures of slack assumes cyclical movements around an underlying trend (growth cycles), and follows and Canova (1999): a trough is defined as a situation where two declines in the cyclical component of GDP are followed by an increase; i.e. at time  $t$   $c_{t+1} > c_t < c_{t-1} < c_{t-2}$ . Similarly, a peak is defined as a situation where two consecutive increases in the cyclical component of GDP are followed by a decline, i.e.  $c_{t+1} < c_t > c_{t-1} > c_{t-2}$ .

---

example, that, once confidence bands are taken into account, the euro area economy would have not had a positive output gap for the last 30 years.

<sup>14</sup> The ECB November Monthly Bulletin (2001) presents a tentative dating of the euro area business cycle using the BB procedure applied on detrended data, not on level data.

The application of this procedure to the real GDP series yields essentially the same turning points than the BB method.<sup>15</sup>

### C. Inflation Performance Criteria

The inflation forecasting exercise was undertaken within the following standard Phillips curve framework:

$$\pi_t = \omega + \alpha(L)\pi_t + \tau(L)gap_t \quad (10a)$$

where CPI inflation<sup>16</sup> depends on lagged values of the inflation and of the output gap measure of interest. To ensure robustness of the analysis, two other variables were included in separate specifications: the price of oil, to account for the impact of supply shocks on inflation dynamics;

$$\pi_t = \omega + \alpha(L)\pi_t + \tau(L)gap_t + \lambda(L)\Delta oil_t \quad (10b)$$

and the change in the output gap, to account for speed limit effects that may affect inflation dynamics in a situation of rapidly accelerating activity (see Lown and Rich (1997)).

$$\pi_t = \omega + \alpha(L)\pi_t + \tau(L)gap_t + \lambda(L)\Delta oil_t + \gamma(L)\Delta gap_t \quad (10c)$$

For each measure of slack we conducted a simulated forecasting exercise. We first estimate estimating equations (10a), (10b) and (10c) with quarterly data from 1970Q1 to 1997Q4. For each quarter  $t$  from 1998Q1 to 2000Q4, we construct simulated forecasts of inflation over the next 12 quarters by estimating equations (10a), (10b) and (10c) in turn using all data available from 1970Q1 up to quarter  $t$ . We consider specifications of the each equation with up to four lags for each of the regressors, thus considering 256 different specifications of each equation for each of the twenty different estimates of the output gaps. For each specification, the Theil U forecast statistic is calculated, namely the ratio of the root mean square error of the forecast under the model to the root mean square error for a “no change” or naive forecast. Values of this statistics greater than 1 indicate that the naive forecast is superior to the regression specification.

---

<sup>15</sup> We are aware of the fact that the type of growth cycles obtained from these different methodologies are likely to produce more turning points than the classical-cycle methodology used to date aggregate GDP. However, the fact that the dating of aggregate GDP is broadly similar under both approaches suggest that the bias introduced probably very small.

<sup>16</sup> To ensure robustness, we conducted the same exercise using the GDP deflator rather than the CPI. The results were broadly similar and are not reported here to save space, but are available upon request.

In order to avoid biasing the results because of the behavior of the series during the forecasting period, four different measures of inflation  $\pi_t$  were examined: (i) quarterly inflation,  $\pi_t^q = (100 * \ln(p_t) - \ln(p_{t-1}))$ , (ii) annual inflation,  $\pi_t^a = (100 * \ln(p_t) - \ln(p_{t-4}))$  (iii) the change in annual inflation 4 quarters ahead,  $(\pi_{t+4}^a - \pi_t^a)$ , and (iv) annual inflation 4 quarters ahead,  $(\pi_{t+4}^a)$ . To fill out 2001 for the more forward looking measures, actual inflation values were used for the first two quarters, with WEO forecasted values used for the 3<sup>rd</sup> and 4<sup>th</sup> quarters. The top panel of Figure 3 contains these four inflation rate series over the full sample.<sup>17</sup>

## V. THE RESULTS

### A. Dating of Business Cycles

The results of the exercise are reported in Table 3. A few basic statistical measures are presented first, with additional statistics on each detrending method in relation to a particular reference cycle presented as well. The maximum and minimum ranges vary across methods, with an average range between  $-1.7$  percent and  $+2$  percent. An extreme case is the UC1 model, (where both potential output and the NAIRU are modeled as random walks), where the output gap varies from  $-6.1$  percent to  $+6$  percent. A possible explanation would be that, as suggested by Camba-Mendez and Rodriguez-Palenzuela (2001), the unemployment rate in the euro area, at least in this specific sample, is an I(2) series, whereas the UC1 specification models it as I(1), resulting in a somewhat downward trending or non-stationary output gap. Although debatable from a theoretical point of view, this issue is addressed with our model UC2, where unemployment is modeled as an I(2) series.

All economic methods record average negative output gaps and, accordingly, show the economy spending most of its time below trend. Troughs identified with economic methods are significantly lower than those found under statistical, survey or thick modeling methods. This is also confirmed by the average amplitude of the contractions. Also, almost all gap measures record the euro-area economy as more likely than not to be in an expansionary phase. Thus one could categorize the euro area as a relatively slow growing economy, which is generally producing at a point below full potential.

The number of peaks and troughs recorded by the different gap measures under our dating rule tends to be relatively high—in double digits in many cases. Hodrick-Prescott methods report a total of 26 peaks and troughs or thirteen complete cycles, while the production function contains 10 peaks and troughs or 5 complete cycles. Next we discuss a few summary statistics of performance for each measure of slack under the three different reference cycles. Specifically, we report summary statistics on false alarms and missing signals as in Canova (1999). Signals

---

<sup>17</sup> It is important to notice that turning points occur at the start of the forecasting period for some of these series, thus penalizing, at least a priori, methods that rely on trend extrapolation.

are ranked as false if a reference cycle turning point does not appear within a  $\pm 3$  quarter interval around the signal date. Signals are ranked missing if no signal appears within a  $\pm 3$  quarter interval around the actual reference cycle turning point.

A worst case scenario would be a gap measure providing a false or missing signal 100 percent of the time on both types of turning points. The sum of these results would be 200 percent under both peaks and troughs, or 400 percent for the total. Gap measures that are more in line with the reference cycle would record lower values, i.e., those that correctly identify all peaks and troughs would result in 0 percent false alarms and missing signals under both peaks and troughs. At the bottom of Table 3, we provide an average ranking of each gap measure across each reference cycle comparator using these summary statistics. The average of these rankings provides a rough guide to the better performing gap measures. Although there are exceptions, one feature that stands out among these rankings of the various detrending methods is their relative uniformity across different reference cycles. Taken together this buttresses the results of this metric; turning point outcomes are not overly sensitive to the reference cycle used.

With a sizable number of turning points signaled by the detrending methods, it is not surprising that the percentage of missing signals is extremely low across all reference cycles. This contrast with Canova's work on U.S. data using NBER and DOC reference cycles, where he finds numerous missing signals across a variety of detrending methods. Overall, the results suggest that the euro area business cycle is smoother than the US business cycle.

Naturally there are more false alarms given the number of identified troughs and peaks from the detrending methods. Our detrending rankings are more or less similar across the three reference cycles, with the one exception of the production function. Under both the AKO and AKT reference cycle comparators, the production function was able to dramatically improve its ability to correctly identify cyclical turning points. Under the AKO reference cycle, the production function did not miss any peak or trough signal and only 20 percent of the time did it provide a false alarm for peaks or troughs. Some of this improvement is due to the smaller number of turning points identified using the production function resulting in fewer false alarms.

Overall, the best measures to identify cyclical turning points are the quadratic trend and the production function. Consumer confidence, the UC4 model and the inefficiency wedge measure were the least effective in capturing turning points.

## **B. Inflation Forecasting**

Results of the inflation forecasting exercise under the three different specifications of the forecasting equation and the four different definitions of inflation are presented in Tables 4-6. Basically all the output gap measures are useful to forecast quarterly inflation, with U-Theil statistics generally below 1. Results vary for other measures of inflation, but overall the worst results were obtained when forecasting annual inflation four quarters ahead, perhaps the most interesting variable from a monetary policy point of view. Statistical methods generally perform poorly, and this result is robust across all three specifications of the forecasting equation and all



four measures of inflation. In terms of the different output gap measures, the most successful are the inefficiency wedge (IW), the UC3 model (Phillips curve with hysteresis effects) and the quadratic trend.

### **C. Summary of the Results**

In view of the differences in performance under the two metrics, we attempt to summarize our findings with a simple scatter plot of the aggregated results in Figure 4. The two metrics—average scores from business cycle dating and inflation forecasting exercises—are labeled as the two axes. Results closer to the origin are best. The plot clearly reveals the dominance the quadratic trend as the best overall measure of the output gap. Other measures perform better in each of the metrics: the production function is somewhat superior for the purpose of dating the business cycle and the inefficiency wedge and the Phillips curve based model with hysteresis effects (UC3) have a better performance in forecasting inflation. Amongst the worst performers are consumers' confidence and the Phillips curve based model UC1. All other methodologies perform rather similarly. For example, no major gain is obtained from improved version of the HP filter with respect to the traditional specification. Business-based survey methods, such as business confidence or capacity utilization, provide very similar information to statistical methods.

## **VI. DISCUSSION AND CONCLUSIONS**

The output gap is one of the most critical ingredients in forecasting inflation under the standard Phillips curve model. Given the importance placed on price stability in the two-pillar framework of the European Central Bank, a full and complete understanding of output gap estimates for the euro area should therefore be considered a vital endeavor. At the same time, although fiscal policy in the euro area is still under the control of national authorities, the Stability and Growth Pact (SGP) has put in place a rule based fiscal system that centers around balance or close to balance over the medium-term. Thus understanding and measuring the permanent and cyclical components of the euro-area business cycle are crucial in determining structural fiscal positions. Taken together, these two sides to the policy mix highlight the importance of determining the best measure of the output gap for the euro area.

This paper has shown that the uncertainty stemming from model selection is large enough to render the output gap largely uninformative, and that an objective criterion to choose across methodologies becomes a fundamental element for the achievement of the right policy mix. Briefly, our results can be summarized as follows:

- There is a large amount of dispersion across gap estimates, even among measures that perform well on both metrics. A researcher taking into account the information from all different methodologies would not be able, with the exception of a few data points, to decide whether the output gap was positive or negative during the sample. As an example, the output gap for 2000 ranges from –5 percent to almost 3 percent, and this does not consider the stochastic uncertainty surrounding these estimates.

- Our results point to the quadratic trend as the methodology that performs the best under both metrics. In addition, the production function was comparatively good at predicting turning points, whereas the inefficiency wedge and the Phillips-curve based estimates were the best inflation predictors.
- Consumer confidence appears as the least informative of all measures of slack. This is an important result at the times, as in 1998 and late 2000, where consumer's and business confidence take divergent directions.
- Traditional statistical methods, such as the HP filter, provide similar information to business-based survey methods, such as business confidence and capacity utilization.

Thus, it seems that output gaps calculated with economic methods, such as the production function or the Phillips curve, are still an important element for the definition of the appropriate policy mix in the euro area. This contrasts with some recent research on the United States (see Cecchetti, Chu and Steindel (2000) and Atkeson and Ohanian (2001) which suggests that the traditional Phillips curve is unable to beat a naive forecast of inflation and therefore is largely useless for monetary policy purposes.

However, the large uncertainty surrounding these estimates cautions against putting too much emphasis on the output gap to analyze cyclical conditions in the euro area. If the uncertainty inherent in the estimation of every methodology is combined with the uncertainty introduced by the lack of an agreed methodology, then the output gap becomes a largely uninformative concept.

### **Three Methodologies to Date the Euro-Area Business Cycle**

#### **BB Procedure**

The simplified BB procedure consists of a set of rules: (i) alternate peaks (troughs) follow troughs (peaks); (ii) each regime, either expansion (trough to peak) or recession (peak to trough), has a minimum duration of 3 quarters; (iii) a turning point is the most extreme value, in levels, between two adjacent regimes (expansion or recession); and (iv) if there is more than one extreme value within a regime, the most recent is chosen as the turning point of the regime. In order to avoid identifying very short upswings or downswings as recoveries or recessions, two additional rules are applied: (v) a minimum duration of cycles (peak to peak or trough to trough) of six quarters; and (vi) a minimum amplitude (in terms of percentage change in the level of real GDP) of expansions and recessions of two standard deviations of real GDP.

#### **AKO Procedure**

The AKO procedure consists of a four-step set of rules to determine classical business cycles using an aggregate euro-area industrial production series. In the first step, extreme values are identified and replaced. Next, averages are calculated to reduce the importance of short-run fluctuations, and the smoothed series used to identify tentative turning points (alternative peaks and troughs) along a  $\pm 12$  month moving window. A similar set of rules are applied to the unsmoothed data in step 3, with added requirement that the amplitude of a phase be at least as large as 1 standard error of the monthly log changes and the duration of a cycle (peak to peak and trough to trough) be at least 15 months. The two sets of turning points are compared and confirmation of a turning point occurs when there is close correspondence (within  $\pm 5$  months) between the two sets of data. The exact point is dated as that identified in the original series.

Use of the AKO algorithm on the euro-area industrial production series results in 3 complete peak-to-peak cycles (4 peaks and 4 troughs). An additional set of turning points are identified (in 1995Q2 and 1996Q2), which stem, to some extent, from economic consequences of the sizable misalignment of the deutsche mark—and therefore other ERM currencies—in the spring of 1995 against the U.S. dollar. This coupled with slower world growth pushed down the manufacturing sector in the euro area for brief period in mid-1995 even as real GDP as whole continued to growth. Although the other turning points broadly coincide with the BB method, the somewhat longer periods of cyclical downturns dated by reliance on industrial production, are actually periods of slightly positive real GDP growth.

#### **AKT Procedure**

Following the methodology of Hamilton (1989), AKT identify and date an “European business cycle” using a Markov-switching structural VAR framework on an aggregated data set of 5 euro

area countries and the United Kingdom.<sup>18</sup> Three regime conditional mean growth rates of real output are distinguished, and analyzed by observing the transitional probabilities of switching between regimes. The classification of regimes and the dating of the business cycle amounts to assigning every observation to a given regime according to its (smoothed) probability. The resulting business cycle reference dates from AKT are in line with the BB procedure outcomes, with a total of 3 peaks and 3 troughs identified. As in AKO, somewhat longer dating of the cyclical downturn in the early 1980s results in an estimated amplitude that is slightly positive.

---

<sup>18</sup> Although inclusion of a non-euro area country such as the United Kingdom may bias the determination of the reference cycle, AKT found that most European countries have relatively synchronous business cycles. Probabilities of an individual European country being in recession after the two oil shocks in the mid- and late 1970s were fairly similar across all countries. The asymmetric shock of German unification did, however, appear to create some less synchronous probabilities of recession in the early 1990s. While we acknowledge the potential for bias, the cycle identified in the early 1990s does not appear to be out of line with the other two methodologies.

Table 1. Output Gaps and Potential Growth Rates In 2000 From Different Methods

	Output Gap	Potential GDP		Output Gap	Potential GDP
Economic Methods			Statistical Methods		
UC1	-4.6	2.6	LT	-0.7	2.4
UC2	-0.5	2.1	QT	2.2	1.8
UC3	1.5	3.4	HP1600	0.7	2.6
UC4	-0.4	2.2	HP893	0.8	2.5
PF	-0.4	2.5	HP3137	0.4	2.8
IW	-0.4	3.2	HPA1600	0.6	2.6
BQ	0.7	2.5	BK	0.4	2.6
Survey Methods			Thick Modeling		
CC	1.4	3.2	MEAN	0.1	2.6
BC	0.6	2.2	WMEAN	0.1	2.9
CU	1.2	2.6	MEDIAN	0.4	2.8

Note: Method abbreviations have been defined explicitly in the text. Broadly, the models are defined as follows: UC1 is the base Apel-Jansson unobservable components model, where the NAIRU follows a random walk and potential output follows a constant drift; UC2 contains random walks with stochastic trends; UC3 allows for hysteresis effects in the NAIRU; UC4 allows the NAIRU to follow a random walk with stochastic trend while potential output follows a random walk with constant drift; PF is the production function; IW is the GGL inefficiency wedge; BQ is the Blanchard-Quah method; CC is consumer confidence; BC is business confidence; CU is capacity utilization; LT is Linear Trend; QT is quadratic trend; HP1600 is the Hodrick-Prescott filter ( $\lambda=1600$ ); HP893 is the Hodrick-Prescott filter ( $\lambda=893$ ); HP3137 is the Hodrick-Prescott filter ( $\lambda=3137$ ); HPA1600 is the Hodrick-Prescott filter ( $\lambda=1600$ ) with ARIMA back- and forward-forecasting; BK is Baxter-King; MEAN is the unweighted mean; WMEAN is the unweighted mean; and MEDIAN is self defined.

Table 2. Chronology of Euro Area Business Cycles

Reference Cycle <sup>1/</sup>	Dating of Cycle		Duration 2/	Amplitude 3/
	Peak	Trough	T/P / P/T	(% change)
BB	1974q3	1975q1	/3	-2.30
	1980q1	1981q1	21/5	-0.74
	1992q1	1993q1	45/5	-1.77
AKO	1974q2	1975q3	/6	-1.11
	1980q1	1982q3	19/11	0.49
	1991q1	1993q3	35/11	1.30
	1995q2	1996q2	8/5	1.21
AKT	1974q1	1975q2	/6	-1.52
	1980q1	1982q4	20/12	0.69
	1992q2	1993q2	39/5	-1.18

1/ Abbreviations are Bry-Boschan (BB), Artis, Kontolemis, and Osborn (AKO), and Artis, Krolzig, and Toro (AKT).

2/ The cyclical duration is recorded as the number of quarters.

3/ Change in real GDP during peak to trough contraction.

Table 3. Business Cycle Statistics for the Euro Area Under Various Detrending Methods 1/

	(1)	(2)	(3)	(4)	(5)	(6)	(7)	(8)	(9)	(10)
	Economic Methods						Statistical Methods			
	UC1	UC2	UC3	UC4	PF	IW	BQ	LT	QT	HP1600
Average	-0.8	-0.5	-0.4	-1.2	-0.8	-0.2	-0.1	0.4	0.1	-0.1
Minimum	-6.1	-3.5	-2.9	-3.9	-2.2	-0.9	-2.7	-2.8	-3.3	-2.8
Maximum	6.0	3.2	1.7	2.5	1.3	0.9	3.0	5.0	3.8	2.5
Percentage of time above trend	46.0	35.0	33.0	32.0	29.0	32.0	43.0	48.0	52.0	45.0
Average at trough	-1.7	-1.5	-0.9	-2.7	-1.7	-0.3	-1.3	-0.7	-1.1	-0.8
Average amplitude of contractions	-3.3	-1.6	-1.1	-2.2	-1.3	-0.5	-1.2	-1.2	-1.6	-0.7
Percentage of time economy expanding	47.6	51.4	55.2	54.3	61.0	42.9	53.3	52.4	55.2	51.4
Number of troughs	11	9	11	6	5	11	7	11	10	12
Number of peaks	11	14	14	7	5	10	12	13	13	14
<b>Using Bry-Boschan reference cycle</b>										
<b>Troughs</b>										
Percent false alarms 2/	72.7	66.7	72.7	100	60.0	100.0	85.7	72.7	70.0	75.0
Percent missing signals 3/	0.0	0.0	0.0	100	33.3	66.7	33.3	0.0	0.0	0.0
<b>Peaks</b>										
Percent false alarms 2/	72.7	78.6	85.7	85.7	60.0	70.0	83.3	76.9	61.5	78.6
Percent missing signals 3/	0.0	0.0	33.3	0.0	33.3	0.0	0.0	0.0	0.0	0.0
Sum of troughs percentages	72.7	66.7	72.7	200.0	93.3	166.7	119.0	72.7	70.0	75.0
Sum of peak percentages	72.7	78.6	119.0	85.7	93.3	70.0	83.3	76.9	61.5	78.6
Totals (lower values signify more precision)	145.5	145.2	191.8	285.7	186.7	236.7	202.4	149.7	131.5	153.6
<b>Using Artis/Kontolemis/Osborn reference cycle</b>										
<b>Troughs</b>										
Percent false alarms 2/	63.6	55.6	54.5	83.3	20.0	81.8	57.1	54.5	50.0	58.3
Percent missing signals 3/	0.0	0.0	0.0	75.0	0.0	50.0	25.0	0.0	0.0	0.0
<b>Peaks</b>										
Percent false alarms 2/	63.6	71.4	71.4	85.7	20.0	60.0	83.3	69.2	61.5	78.6
Percent missing signals 3/	0.0	0.0	0.0	0.0	0.0	0.0	0.0	0.0	0.0	25.0
Sum of troughs percentages	63.6	55.6	54.5	158.3	20.0	131.8	82.1	54.5	50.0	58.3
Sum of peak percentages	63.6	71.4	71.4	85.7	20.0	60.0	83.3	69.2	61.5	103.6
Totals (lower values signify more precision)	127.3	127.0	126.0	244.0	40.0	191.8	165.5	123.8	111.5	161.9
<b>Using Artis/Krolzig/Toro reference cycle</b>										
<b>Troughs</b>										
Percent false alarms 2/	72.7	66.7	72.7	100.0	40.0	100.0	71.4	72.7	70.0	75.0
Percent missing signals 3/	0.0	0.0	0.0	100.0	0.0	100.0	33.3	0.0	0.0	0.0
<b>Peaks</b>										
Percent false alarms 2/	72.7	78.6	85.7	100.0	60.0	90.0	91.7	76.9	61.5	78.6
Percent missing signals 3/	0.0	0.0	33.3	0.0	33.3	33.3	0.0	0.0	0.0	0.0
Sum of troughs percentages	72.7	66.7	72.7	200.0	40.0	200.0	104.8	72.7	70.0	75.0
Sum of peak percentages	72.7	78.6	119.0	100.0	93.3	123.3	91.7	76.9	61.5	78.6
Totals (lower values signify more precision)	145.5	145.2	191.8	300.0	133.3	323.3	196.4	149.7	131.5	153.6
<b>Detrending rankings</b>										
Using Bry-Boschan reference cycle	4	3	12	19	11	17	15	5	2	7
Using Artis/Kontolemis/Osborn reference cycle	7	6	5	19	1	18	15	4	2	14
Using Artis/Krolzig/Toro reference cycle	4	3	15	17	2	19	16	5	1	6
Average of rankings	5	4	11	18	5	18	15	5	2	9

Note: See footnote to Table 1 for definition of the method abbreviations.

1/ The table shows the results of comparing turning points determined by a simple dating rule of the cyclical components (or output gaps) stemming from the 20 detrending methods versus a reference cycle. The reference cycle is as shown in Table 1 and has been determined through an application of the Bry-Boschan algorithm. The following dating rule was applied to the cyclical components: a trough occurs as a situation where two declines in the cyclical component of GDP are followed by an increase; i.e. at time  $t$   $ct+1 > ct < ct-1 < ct-2$ . Similarly, a peak is defined as a situation where two consecutive increases in the cyclical component of GDP are followed by a decline, i.e.  $ct+1 < ct > ct-1 > ct-2$ .

2/ A false alarm occurs if there is no turning point within  $\pm 3$  quarters of the reference date.

3/ A missing signal occurs if the method does not signal a turning point within  $\pm 3$  quarters of the reference date.

Table 3. Business Cycle Statistics for the Euro Area Under Various Detrending Methods (continued) 1/

	(11)	(12)	(13)	(14)	(15)	(16)	(17)	(18)	(19)	(20)
	Statistical Methods				Survey Methods			Thick Modeling		
	HP893	HP3137	HPA1600	BK	BC	CC	CU	MEAN	WMEAN	MEDIAN
Average	-0.1	-0.1	-0.1	0.0	0.0	0.0	0.0	-0.2	-0.2	-0.1
Minimum	-2.7	-2.6	-2.8	-2.5	-2.8	-1.9	-2.4	-1.7	-1.5	-2.1
Maximum	2.6	2.1	2.5	2.1	1.6	2.1	1.9	2.0	1.9	2.1
Percentage of time above trend	43.0	47.0	43.0	46.0	60.0	61.0	54.0	43.0	43.0	39.0
Average at trough	-0.9	-0.8	-0.8	-0.7	-0.8	-0.5	-1.1	-1.0	-0.9	-0.8
Average amplitude of contractions	-0.8	-0.6	-0.7	-0.6	-0.9	-1.0	-0.8	-1.0	-0.9	-0.7
Percentage of time economy expanding	52.4	53.3	51.4	53.3	52.4	52.4	55.2	54.3	53.3	49.5
Number of troughs	12	12	12	10	10	9	8	9	11	12
Number of peaks	14	15	14	11	11	13	12	11	12	12
<b>Using Bry-Boschan reference cycle</b>										
<b>Troughs</b>										
Percent false alarms 2/	75.0	75.0	75.0	70.0	70.0	77.8	62.5	77.8	81.8	58.3
Percent missing signals 3/	0.0	0.0	0.0	0.0	0.0	33.3	0.0	33.3	33.3	0.0
<b>Peaks</b>										
Percent false alarms 2/	93	93	92.9	81.8	90.9	100.0	83.3	100.0	83.3	58.3
Percent missing signals 3/	0.0	0.0	0.0	0.0	33.3	66.7	33.3	0.0	0.0	0.0
Sum of troughs percentages	75.0	75.0	75.0	70.0	70.0	111.1	62.5	111.1	115.2	58.3
Sum of peak percentages	92.9	93.3	92.9	81.8	124.2	166.7	116.7	100.0	83.3	58.3
Totals (lower values signify more precision)	167.9	168.3	167.9	151.8	194.2	277.8	179.2	211.1	198.5	116.7
<b>Using Artis/Kontolemis/Osborn reference cycle</b>										
<b>Troughs</b>										
Percent false alarms 2/	0.0	0.0	58.3	60.0	60.0	77.8	37.5	50.0	60.0	58.3
Percent missing signals 3/	14.0	15.0	0.0	0.0	0.0	50.0	0.0	0.0	0.0	0.0
<b>Peaks</b>										
Percent false alarms 2/	85.7	86.7	85.7	81.8	81.8	84.6	75.0	100.0	100.0	100.0
Percent missing signals 3/	0.0	0.0	25.0	0.0	25.0	50.0	0.0	0.0	0.0	0.0
Sum of troughs percentages	58.3	58.3	58.3	60.0	60.0	127.8	37.5	50.0	60.0	58.3
Sum of peak percentages	85.7	86.7	110.7	81.8	106.8	134.6	75.0	100.0	100.0	100.0
Totals (lower values signify more precision)	144.0	145.0	169.0	141.8	166.8	262.4	112.5	150.0	160.0	158.3
<b>Using Artis/Krolzig/Toro reference cycle</b>										
<b>Troughs</b>										
Percent false alarms 2/	75.0	75.0	75.0	70.0	70.0	88.9	50.0	66.7	72.7	75.0
Percent missing signals 3/	0.0	0.0	0.0	0.0	0.0	66.7	0.0	0.0	0.0	0.0
<b>Peaks</b>										
Percent false alarms 2/	92.9	93.3	92.9	90.9	81.8	84.6	100.0	100.0	100.0	100.0
Percent missing signals 3/	0.0	0.0	0.0	0.0	33.3	66.7	33.3	0.0	0.0	0.0
Sum of troughs percentages	75.0	75.0	75.0	70.0	70.0	155.6	50.0	66.7	72.7	75.0
Sum of peak percentages	92.9	93.3	92.9	90.9	115.2	151.3	133.3	100.0	100.0	100.0
Totals (lower values signify more precision)	167.9	168.3	167.9	160.9	185.2	306.8	183.3	166.7	172.7	175.0
<b>Detrending rankings</b>										
Using Bry-Boschan reference cycle	8	9	8	6	13	18	10	16	14	1
Using Artis/Kontolemis/Osborn reference cycle	9	10	17	8	16	20	3	11	13	12
Using Artis/Krolzig/Toro reference cycle	9	10	9	7	14	18	13	8	11	12
Average of rankings	9	10	11	7	14	19	9	12	13	8

Note: See footnote to Table 1 for definition of the method abbreviations.

1/ The table shows the results of comparing turning points determined by a simple dating rule of the cyclical components (or output gaps) stemming from the 20 detrending methods versus a reference cycle. The reference cycle is as shown in Table 1 and has been determined through an application of the Bry-Boschan algorithm. The following dating rule was applied to the cyclical components: a trough occurs as a situation where two declines in the cyclical component of GDP are followed by an increase; i.e. at time  $t$   $ct+1 > ct < ct-1 < ct-2$ . Similarly, a peak is defined as a situation where two consecutive increases in the cyclical component of GDP are followed by a decline, i.e.  $ct+1 < ct > ct-1 > ct-2$ .

2/ A false alarm occurs if there is no turning point within  $\pm 3$  quarters of the reference date.

3/ A missing signal occurs if the method does not signal a turning point within  $\pm 3$  quarters of the reference date.



Table 4. Theil U Statistics from Philips Curve Forecasting Exercise Using Equation 10a 1/

	Economic Methods						Statistical Methods			
	UC1	UC2	UC3	UC4	PF	IW	BQ	LT	QT	HP1600
<b>Quarterly inflation changes</b>										
Steps										
1	0.82	0.82	0.84	0.82	0.79	0.73	0.78	0.80	0.80	0.82
2	0.74	0.70	0.70	0.68	0.68	0.59	0.66	0.70	0.68	0.71
3	0.78	0.66	0.69	0.66	0.68	0.57	0.62	0.68	0.68	0.69
4	1.35	0.95	1.02	1.01	1.09	0.95	0.92	1.07	1.12	1.06
5	0.84	0.74	0.73	0.70	0.71	0.56	0.65	0.73	0.72	0.73
6	0.77	0.60	0.50	0.50	0.49	0.43	0.47	0.60	0.48	0.55
7	0.74	0.51	0.43	0.41	0.43	0.36	0.38	0.54	0.44	0.48
8	1.04	0.64	0.50	0.55	0.54	0.53	0.51	0.68	0.62	0.57
9	0.92	0.67	0.52	0.56	0.51	0.46	0.50	0.66	0.60	0.59
10	0.82	0.53	0.33	0.38	0.38	0.37	0.37	0.56	0.36	0.42
11	0.78	0.42	0.18	0.29	0.30	0.34	0.31	0.49	0.31	0.30
12	1.19	0.60	0.88	1.08	0.67	0.37	0.65	0.57	1.32	0.58
Average	0.90	0.65	0.61	0.64	0.61	0.52	0.57	0.67	0.68	0.63
<b>Annual inflation changes</b>										
Steps										
1	1.10	0.88	0.87	0.81	0.93	0.77	0.77	1.00	0.81	0.88
2	1.16	0.81	0.76	0.71	0.87	0.62	0.67	1.04	0.69	0.81
3	1.16	0.81	0.75	0.67	0.85	0.55	0.65	1.04	0.67	0.81
4	1.15	0.83	0.74	0.66	0.84	0.54	0.63	1.04	0.64	0.81
5	1.18	0.86	0.70	0.63	0.80	0.52	0.60	1.07	0.58	0.80
6	1.24	0.90	0.64	0.58	0.77	0.50	0.58	1.12	0.51	0.80
7	1.31	0.96	0.58	0.54	0.73	0.50	0.55	1.18	0.44	0.79
8	1.41	1.02	0.48	0.49	0.69	0.53	0.54	1.25	0.35	0.78
9	1.56	1.07	0.28	0.40	0.64	0.57	0.54	1.36	0.21	0.75
10	1.59	1.09	0.31	0.40	0.62	0.58	0.54	1.38	0.25	0.72
11	1.54	1.06	0.24	0.41	0.61	0.57	0.56	1.34	0.18	0.70
12	1.78	1.08	0.17	0.34	0.59	0.62	0.58	1.51	0.18	0.65
Average	1.35	0.95	0.54	0.55	0.74	0.57	0.60	1.19	0.46	0.78
<b>Change in annual inflation four quarters ahead</b>										
Steps										
1	1.36	1.23	0.93	1.14	1.29	0.93	1.09	1.38	1.09	1.14
2	1.37	1.22	0.83	1.09	1.30	0.84	1.04	1.41	1.08	1.15
3	1.36	1.23	0.76	1.04	1.27	0.80	1.03	1.39	1.04	1.13
4	1.29	1.19	0.70	0.96	1.19	0.76	0.96	1.30	0.97	1.07
5	1.22	1.16	0.64	0.89	1.12	0.72	0.91	1.22	0.89	1.01
6	1.21	1.16	0.59	0.83	1.08	0.71	0.88	1.18	0.84	0.99
7	1.14	1.11	0.54	0.75	1.00	0.68	0.82	1.09	0.75	0.91
8	1.12	1.11	0.49	0.70	0.96	0.66	0.79	1.05	0.69	0.89
9	1.10	1.09	0.43	0.63	0.91	0.62	0.75	1.02	0.62	0.85
10	1.02	1.00	0.36	0.52	0.84	0.53	0.69	0.93	0.52	0.76
11	0.95	0.92	0.17	0.31	0.73	0.32	0.53	0.87	0.31	0.65
12	0.75	0.73	0.18	0.03	0.50	0.19	0.41	0.65	0.04	0.45
Average	1.16	1.10	0.55	0.74	1.02	0.65	0.83	1.12	0.74	0.92
<b>Annual inflation four quarters ahead</b>										
Steps										
1	1.55	1.11	0.88	0.97	0.98	0.89	0.90	1.19	0.89	1.01
2	1.60	1.14	0.83	0.94	0.99	0.82	0.88	1.23	0.85	1.04
3	1.61	1.17	0.80	0.91	0.99	0.77	0.88	1.25	0.82	1.06
4	1.61	1.20	0.78	0.89	1.00	0.73	0.87	1.26	0.78	1.07
5	1.58	1.21	0.77	0.88	0.99	0.68	0.86	1.25	0.76	1.08
6	1.55	1.22	0.76	0.87	0.98	0.64	0.85	1.24	0.73	1.08
7	1.51	1.23	0.76	0.86	0.97	0.61	0.84	1.23	0.71	1.08
8	1.48	1.24	0.75	0.84	0.96	0.56	0.83	1.22	0.68	1.09
9	1.45	1.24	0.74	0.82	0.94	0.52	0.81	1.21	0.65	1.09
10	1.45	1.26	0.72	0.80	0.93	0.46	0.80	1.22	0.61	1.10
11	1.46	1.29	0.69	0.77	0.91	0.38	0.78	1.24	0.56	1.12
12	1.48	1.31	0.68	0.74	0.89	0.34	0.77	1.24	0.49	1.13
Average	1.53	1.22	0.76	0.86	0.96	0.62	0.84	1.23	0.71	1.08

Note: See footnote to Table 1 for definition of the method abbreviations.

1/ The inflation regression includes lags of inflation and output gaps as explanatory variables.

Table 4. Theil U Statistics from Philips Curve Forecasting Exercise Using Equation 10a (continued) 1/

	HP893	HP3137	HPA1600	BK	Survey Methods			Thick Modeling		
					BC	CC	CU	MEAN	WMEAN	MEDIAN
<b>Quarterly inflation changes</b>										
Steps										
1	0.81	0.82	0.82	0.83	0.85	0.80	0.84	0.80	0.80	0.81
2	0.69	0.70	0.71	0.69	0.74	0.68	0.72	0.68	0.68	0.69
3	0.67	0.69	0.69	0.65	0.72	0.66	0.69	0.64	0.65	0.67
4	1.04	1.09	1.07	0.99	1.13	1.03	1.06	0.99	1.00	1.06
5	0.72	0.75	0.74	0.73	0.77	0.72	0.75	0.69	0.69	0.72
6	0.53	0.56	0.56	0.55	0.58	0.53	0.57	0.51	0.51	0.52
7	0.46	0.51	0.50	0.48	0.51	0.49	0.50	0.43	0.43	0.46
8	0.55	0.60	0.59	0.60	0.60	0.63	0.57	0.54	0.54	0.58
9	0.57	0.60	0.60	0.62	0.59	0.63	0.58	0.55	0.56	0.59
10	0.40	0.44	0.44	0.45	0.41	0.44	0.42	0.40	0.39	0.40
11	0.29	0.33	0.32	0.34	0.29	0.36	0.31	0.31	0.30	0.30
12	0.61	0.57	0.58	0.65	0.36	0.86	0.52	0.61	0.66	0.73
Average	0.61	0.64	0.63	0.63	0.63	0.65	0.63	0.60	0.60	0.63
<b>Annual inflation changes</b>										
Steps										
1	0.86	0.91	0.90	0.89	0.96	0.84	0.96	0.85	0.83	0.87
2	0.79	0.87	0.84	0.81	0.98	0.78	0.94	0.77	0.75	0.76
3	0.77	0.87	0.84	0.80	1.01	0.75	0.95	0.76	0.73	0.74
4	0.77	0.88	0.85	0.82	1.01	0.75	0.96	0.76	0.73	0.74
5	0.76	0.88	0.84	0.82	1.00	0.74	0.97	0.75	0.72	0.72
6	0.75	0.88	0.84	0.83	0.99	0.72	0.97	0.74	0.71	0.71
7	0.74	0.88	0.85	0.85	0.96	0.71	0.98	0.74	0.70	0.69
8	0.73	0.88	0.85	0.87	0.91	0.72	0.96	0.75	0.70	0.68
9	0.69	0.85	0.83	0.88	0.83	0.73	0.92	0.74	0.69	0.62
10	0.68	0.84	0.81	0.88	0.78	0.75	0.88	0.73	0.68	0.61
11	0.66	0.82	0.78	0.86	0.75	0.78	0.86	0.72	0.67	0.59
12	0.61	0.79	0.75	0.85	0.67	0.81	0.79	0.73	0.66	0.52
Average	0.74	0.86	0.83	0.85	0.90	0.76	0.93	0.75	0.71	0.69
<b>Change in annual inflation four quarters ahead</b>										
Steps										
1	1.15	1.14	1.15	1.19	1.05	1.15	1.12	1.27	1.23	1.17
2	1.17	1.15	1.17	1.17	1.02	1.10	1.07	1.28	1.24	1.17
3	1.14	1.14	1.15	1.15	0.98	1.07	1.02	1.26	1.22	1.15
4	1.08	1.08	1.09	1.09	0.91	1.01	0.95	1.18	1.15	1.09
5	1.01	1.02	1.03	1.04	0.86	0.95	0.89	1.10	1.07	1.04
6	0.98	1.00	1.00	1.02	0.82	0.92	0.85	1.06	1.04	1.02
7	0.90	0.94	0.93	0.97	0.76	0.85	0.78	0.97	0.95	0.95
8	0.86	0.92	0.90	0.95	0.72	0.80	0.75	0.93	0.91	0.93
9	0.82	0.90	0.87	0.92	0.67	0.76	0.69	0.88	0.87	0.89
10	0.73	0.82	0.78	0.83	0.59	0.68	0.62	0.78	0.78	0.80
11	0.60	0.73	0.68	0.70	0.41	0.53	0.48	0.66	0.66	0.67
12	0.36	0.51	0.47	0.42	0.14	0.32	0.17	0.43	0.47	0.47
Average	0.90	0.95	0.93	0.95	0.74	0.85	0.78	0.98	0.97	0.95
<b>Annual inflation four quarters ahead</b>										
Steps										
1	1.00	1.02	1.02	1.07	1.02	0.90	1.06	1.03	1.01	1.01
2	1.03	1.06	1.06	1.08	1.02	0.84	1.07	1.05	1.03	1.02
3	1.04	1.08	1.07	1.10	1.03	0.82	1.07	1.05	1.03	1.03
4	1.05	1.10	1.09	1.11	1.05	0.80	1.09	1.06	1.04	1.05
5	1.05	1.11	1.10	1.13	1.06	0.78	1.10	1.05	1.03	1.05
6	1.06	1.12	1.10	1.13	1.07	0.76	1.10	1.04	1.03	1.05
7	1.06	1.12	1.10	1.14	1.08	0.76	1.12	1.03	1.02	1.05
8	1.05	1.13	1.11	1.14	1.09	0.73	1.12	1.02	1.01	1.05
9	1.06	1.14	1.12	1.15	1.10	0.72	1.13	1.01	1.00	1.05
10	1.06	1.16	1.13	1.16	1.11	0.70	1.15	1.00	1.00	1.05
11	1.08	1.19	1.15	1.17	1.12	0.68	1.17	0.99	1.00	1.05
12	1.07	1.20	1.16	1.18	1.12	0.65	1.17	0.98	0.99	1.05
Average	1.05	1.12	1.10	1.13	1.07	0.76	1.11	1.02	1.02	1.04

Note: See footnote to Table 1 for definition of the method abbreviations.

1/ The inflation regression includes lags of inflation and output gaps as explanatory variables.

Table 5. Theil U Statistics from Philips Curve Forecasting Exercise Using Equation 10b 1/

	Economic Methods							Statistical Methods		
	UC1	UC2	UC3	UC4	PF	IW	BQ	LT	QT	HP1600
<b>Quarterly inflation changes</b>										
Steps										
1	0.82	0.82	0.85	0.83	0.81	0.74	0.79	0.81	0.81	0.83
2	0.74	0.70	0.73	0.70	0.70	0.61	0.67	0.71	0.69	0.73
3	0.77	0.67	0.72	0.69	0.71	0.59	0.64	0.69	0.70	0.72
4	1.33	0.99	1.11	1.11	1.17	0.99	0.97	1.10	1.17	1.14
5	0.83	0.76	0.78	0.76	0.76	0.58	0.69	0.76	0.76	0.79
6	0.74	0.61	0.54	0.54	0.53	0.45	0.50	0.61	0.51	0.59
7	0.72	0.53	0.48	0.48	0.47	0.39	0.42	0.56	0.46	0.53
8	1.01	0.69	0.61	0.68	0.60	0.56	0.58	0.72	0.65	0.65
9	0.90	0.70	0.61	0.65	0.56	0.49	0.54	0.68	0.62	0.65
10	0.81	0.53	0.39	0.43	0.42	0.39	0.40	0.57	0.39	0.47
11	0.74	0.43	0.26	0.37	0.33	0.34	0.34	0.48	0.33	0.34
12	1.10	0.73	1.03	1.35	0.74	0.41	0.73	0.63	1.28	0.67
Average	0.88	0.68	0.68	0.72	0.65	0.54	0.61	0.69	0.70	0.67
<b>Annual inflation changes</b>										
Steps										
1	1.13	0.92	0.90	0.84	0.99	0.82	0.83	1.06	0.85	0.94
2	1.23	0.88	0.84	0.77	0.99	0.74	0.77	1.15	0.78	0.94
3	1.24	0.91	0.85	0.76	1.00	0.70	0.78	1.17	0.77	0.96
4	1.23	0.93	0.84	0.74	0.98	0.68	0.75	1.17	0.74	0.97
5	1.27	0.97	0.82	0.72	0.96	0.67	0.74	1.21	0.69	0.97
6	1.34	1.03	0.77	0.68	0.94	0.67	0.74	1.27	0.63	0.99
7	1.41	1.09	0.72	0.65	0.91	0.69	0.73	1.33	0.56	0.99
8	1.51	1.15	0.63	0.60	0.89	0.73	0.74	1.41	0.47	1.00
9	1.67	1.22	0.49	0.55	0.87	0.80	0.79	1.54	0.34	0.99
10	1.70	1.23	0.49	0.55	0.84	0.81	0.78	1.56	0.32	0.97
11	1.63	1.18	0.47	0.54	0.80	0.77	0.78	1.50	0.28	0.92
12	1.86	1.19	0.35	0.47	0.80	0.83	0.82	1.67	0.17	0.89
Average	1.44	1.06	0.68	0.66	0.91	0.74	0.77	1.34	0.55	0.96
<b>Change in annual inflation four quarters ahead</b>										
Steps										
1	1.42	1.23	0.92	1.16	1.31	0.95	1.07	1.40	1.10	1.14
2	1.44	1.24	0.82	1.11	1.33	0.87	1.03	1.44	1.10	1.16
3	1.43	1.25	0.75	1.06	1.30	0.83	1.01	1.41	1.06	1.14
4	1.34	1.20	0.68	0.97	1.21	0.78	0.94	1.32	0.98	1.08
5	1.28	1.17	0.63	0.90	1.13	0.75	0.89	1.24	0.90	1.02
6	1.25	1.16	0.56	0.84	1.08	0.73	0.85	1.19	0.84	0.98
7	1.17	1.10	0.50	0.75	0.99	0.69	0.77	1.08	0.74	0.90
8	1.16	1.10	0.44	0.69	0.94	0.66	0.74	1.04	0.66	0.86
9	1.13	1.07	0.37	0.61	0.86	0.61	0.68	1.00	0.58	0.81
10	1.02	0.97	0.31	0.48	0.77	0.49	0.59	0.89	0.45	0.70
11	1.00	0.91	0.23	0.28	0.71	0.31	0.47	0.86	0.27	0.62
12	0.83	0.74	0.25	0.04	0.53	0.22	0.39	0.68	0.05	0.45
Average	1.21	1.09	0.54	0.74	1.01	0.66	0.79	1.13	0.73	0.90
<b>Annual inflation four quarters ahead</b>										
Steps										
1	1.53	1.11	0.87	0.95	0.94	0.91	0.86	1.15	0.88	1.00
2	1.57	1.13	0.80	0.90	0.94	0.84	0.83	1.19	0.83	1.01
3	1.58	1.15	0.76	0.87	0.94	0.79	0.82	1.20	0.79	1.03
4	1.58	1.17	0.72	0.85	0.94	0.74	0.80	1.21	0.75	1.04
5	1.55	1.19	0.71	0.84	0.93	0.70	0.79	1.19	0.72	1.04
6	1.52	1.20	0.69	0.81	0.91	0.66	0.77	1.18	0.68	1.03
7	1.48	1.20	0.68	0.80	0.90	0.62	0.76	1.16	0.65	1.03
8	1.44	1.21	0.65	0.77	0.87	0.57	0.74	1.14	0.61	1.03
9	1.41	1.22	0.64	0.75	0.85	0.53	0.72	1.14	0.57	1.03
10	1.41	1.24	0.61	0.72	0.83	0.46	0.70	1.14	0.52	1.03
11	1.43	1.27	0.57	0.69	0.82	0.40	0.68	1.15	0.47	1.05
12	1.45	1.30	0.56	0.66	0.80	0.36	0.67	1.16	0.40	1.06
Average	1.50	1.20	0.69	0.80	0.89	0.63	0.76	1.17	0.65	1.03

Note: See footnote to Table 1 for definition of the method abbreviations.

1/ The inflation regression includes lags of inflation, output gaps, and oil price inflation as explanatory variables.

Table 5. Theil U Statistics from Philips Curve Forecasting Exercise Using Equation 10b (continued) 1/

	Statistical Methods				Survey Methods			Thick Modeling		
	HP893	HP3137	HPA1600	BK	BC	CC	CU	MEAN	WMEAN	MEDIAN
<b>Quarterly inflation changes</b>										
Steps										
1	0.82	0.83	0.83	0.83	0.86	0.81	0.85	0.81	0.81	0.82
2	0.71	0.73	0.73	0.70	0.77	0.70	0.73	0.69	0.69	0.71
3	0.70	0.72	0.72	0.67	0.76	0.68	0.71	0.67	0.67	0.69
4	1.11	1.16	1.15	1.06	1.21	1.10	1.12	1.05	1.06	1.12
5	0.77	0.80	0.79	0.77	0.82	0.77	0.79	0.73	0.74	0.76
6	0.56	0.60	0.60	0.59	0.62	0.58	0.60	0.54	0.54	0.56
7	0.50	0.55	0.54	0.52	0.56	0.54	0.53	0.47	0.47	0.50
8	0.62	0.67	0.66	0.70	0.68	0.71	0.65	0.61	0.61	0.65
9	0.62	0.66	0.66	0.68	0.65	0.68	0.64	0.60	0.60	0.63
10	0.44	0.48	0.48	0.47	0.46	0.48	0.45	0.42	0.42	0.43
11	0.32	0.37	0.35	0.37	0.33	0.40	0.33	0.33	0.33	0.33
12	0.69	0.68	0.68	0.84	0.55	0.97	0.69	0.73	0.76	0.82
Average	0.66	0.69	0.68	0.68	0.69	0.70	0.67	0.64	0.64	0.67
<b>Annual inflation changes</b>										
Steps										
1	0.92	0.98	0.96	0.94	1.07	0.91	1.02	0.90	0.88	0.91
2	0.90	1.01	0.97	0.92	1.16	0.93	1.04	0.88	0.85	0.84
3	0.91	1.04	0.99	0.94	1.22	0.93	1.07	0.89	0.86	0.85
4	0.92	1.05	1.00	0.95	1.22	0.93	1.08	0.88	0.85	0.85
5	0.92	1.06	1.01	0.96	1.23	0.94	1.10	0.88	0.85	0.83
6	0.92	1.09	1.03	0.99	1.24	0.94	1.12	0.89	0.85	0.83
7	0.93	1.10	1.05	1.02	1.23	0.96	1.14	0.90	0.86	0.82
8	0.92	1.11	1.06	1.04	1.19	1.00	1.13	0.91	0.86	0.81
9	0.92	1.12	1.07	1.08	1.15	1.08	1.11	0.93	0.87	0.78
10	0.90	1.10	1.05	1.08	1.11	1.11	1.08	0.92	0.86	0.77
11	0.85	1.05	1.00	1.03	1.06	1.11	1.03	0.88	0.83	0.73
12	0.82	1.05	0.98	1.03	1.02	1.18	0.97	0.89	0.82	0.66
Average	0.90	1.06	1.02	1.00	1.16	1.00	1.07	0.90	0.85	0.81
<b>Change in annual inflation four quarters ahead</b>										
Steps										
1	1.15	1.14	1.15	1.19	1.03	1.14	1.11	1.29	1.24	1.18
2	1.17	1.16	1.17	1.18	1.00	1.10	1.06	1.31	1.27	1.19
3	1.15	1.14	1.15	1.16	0.95	1.07	1.01	1.28	1.24	1.17
4	1.08	1.08	1.09	1.10	0.89	1.00	0.94	1.19	1.16	1.10
5	1.02	1.03	1.03	1.05	0.83	0.95	0.88	1.11	1.09	1.05
6	0.97	1.00	0.99	1.03	0.77	0.91	0.82	1.06	1.04	1.02
7	0.88	0.92	0.91	0.97	0.69	0.84	0.75	0.96	0.94	0.94
8	0.83	0.90	0.88	0.95	0.64	0.78	0.70	0.91	0.90	0.91
9	0.78	0.86	0.83	0.90	0.57	0.72	0.63	0.85	0.84	0.86
10	0.67	0.77	0.72	0.79	0.47	0.62	0.54	0.73	0.73	0.75
11	0.57	0.70	0.65	0.68	0.32	0.49	0.42	0.64	0.64	0.64
12	0.37	0.52	0.48	0.44	0.13	0.33	0.16	0.44	0.49	0.47
Average	0.89	0.93	0.92	0.95	0.69	0.83	0.75	0.98	0.96	0.94
<b>Annual inflation four quarters ahead</b>										
Steps										
1	0.98	1.01	1.01	1.07	1.01	0.89	1.05	1.01	0.99	0.99
2	0.99	1.03	1.03	1.07	1.00	0.82	1.05	1.01	0.99	1.00
3	1.00	1.05	1.04	1.09	1.00	0.80	1.05	1.01	0.99	1.01
4	1.01	1.07	1.05	1.10	1.01	0.77	1.06	1.00	0.99	1.01
5	1.00	1.08	1.06	1.12	1.02	0.76	1.06	0.99	0.98	1.02
6	0.99	1.08	1.05	1.12	1.02	0.73	1.06	0.97	0.96	1.01
7	0.99	1.08	1.05	1.12	1.02	0.72	1.07	0.95	0.95	1.01
8	0.98	1.08	1.05	1.13	1.03	0.69	1.07	0.93	0.93	1.00
9	0.98	1.09	1.06	1.13	1.03	0.68	1.08	0.92	0.92	1.00
10	0.98	1.11	1.06	1.14	1.04	0.65	1.08	0.90	0.91	0.99
11	0.99	1.14	1.08	1.16	1.05	0.63	1.10	0.90	0.91	0.99
12	0.99	1.15	1.10	1.17	1.05	0.61	1.12	0.88	0.90	1.00
Average	0.99	1.08	1.05	1.12	1.02	0.73	1.07	0.96	0.95	1.00

Note: See footnote to Table 1 for definition of the method abbreviations.

1/ The inflation regression includes lags of inflation, output gaps, and oil price inflation as explanatory variables.

Table 6. Theil U Statistics from Philips Curve Forecasting Exercise Using Equation 10c 1/

	Economic Methods							Statistical Methods		
	UC1	UC2	UC3	UC4	PF	IW	BQ	LT	QT	HP1600
<b>Quarterly inflation changes</b>										
Steps										
1	0.82	0.82	0.87	0.83	0.80	0.73	0.78	0.80	0.80	0.83
2	0.76	0.71	0.73	0.69	0.70	0.60	0.67	0.71	0.69	0.73
3	0.81	0.67	0.73	0.69	0.70	0.59	0.64	0.69	0.69	0.71
4	1.42	0.97	1.10	1.10	1.16	1.00	0.97	1.09	1.15	1.12
5	0.87	0.76	0.79	0.76	0.75	0.58	0.69	0.76	0.75	0.79
6	0.80	0.63	0.57	0.55	0.54	0.47	0.51	0.62	0.52	0.61
7	0.79	0.55	0.49	0.49	0.48	0.41	0.43	0.57	0.47	0.55
8	1.11	0.71	0.63	0.68	0.62	0.58	0.58	0.74	0.66	0.67
9	0.99	0.72	0.63	0.66	0.58	0.52	0.55	0.70	0.63	0.67
10	0.88	0.57	0.44	0.44	0.43	0.44	0.42	0.59	0.39	0.49
11	0.82	0.47	0.30	0.37	0.35	0.39	0.36	0.50	0.33	0.37
12	1.32	0.70	1.20	1.29	0.74	0.35	0.69	0.66	1.19	0.69
Average	0.95	0.69	0.71	0.71	0.65	0.56	0.61	0.70	0.69	0.69
<b>Annual inflation changes</b>										
Steps										
1	1.13	0.91	0.95	0.85	0.99	0.87	0.85	1.04	0.83	0.92
2	1.24	0.87	0.85	0.80	1.00	0.82	0.78	1.14	0.78	0.94
3	1.26	0.89	0.86	0.80	1.01	0.79	0.80	1.17	0.78	0.97
4	1.25	0.92	0.85	0.78	1.00	0.77	0.77	1.17	0.75	0.98
5	1.29	0.97	0.83	0.76	0.99	0.77	0.76	1.21	0.71	0.99
6	1.36	1.03	0.79	0.73	0.97	0.79	0.76	1.27	0.66	1.01
7	1.44	1.11	0.74	0.70	0.95	0.82	0.76	1.34	0.59	1.03
8	1.54	1.17	0.66	0.67	0.93	0.87	0.77	1.42	0.51	1.03
9	1.72	1.25	0.53	0.63	0.92	0.96	0.83	1.55	0.40	1.04
10	1.76	1.27	0.54	0.63	0.90	0.96	0.82	1.58	0.39	1.02
11	1.69	1.22	0.50	0.62	0.86	0.90	0.81	1.52	0.34	0.98
12	1.93	1.23	0.37	0.57	0.88	0.97	0.86	1.70	0.25	0.97
Average	1.47	1.07	0.71	0.71	0.95	0.86	0.80	1.34	0.58	0.99
<b>Change in annual inflation four quarters ahead</b>										
Steps										
1	1.39	1.17	0.97	1.15	1.30	0.89	1.05	1.36	1.09	1.12
2	1.41	1.16	0.83	1.10	1.32	0.80	0.98	1.41	1.10	1.15
3	1.39	1.18	0.76	1.05	1.29	0.75	0.97	1.38	1.05	1.13
4	1.31	1.14	0.68	0.96	1.21	0.69	0.89	1.29	0.97	1.07
5	1.25	1.11	0.63	0.90	1.13	0.65	0.84	1.21	0.90	1.02
6	1.22	1.11	0.56	0.84	1.09	0.63	0.80	1.17	0.84	0.98
7	1.14	1.05	0.50	0.74	1.00	0.59	0.73	1.07	0.75	0.91
8	1.13	1.05	0.43	0.68	0.96	0.55	0.68	1.03	0.68	0.88
9	1.09	1.02	0.36	0.59	0.89	0.49	0.61	0.99	0.59	0.83
10	0.97	0.91	0.31	0.47	0.80	0.39	0.54	0.87	0.46	0.71
11	0.91	0.82	0.25	0.26	0.73	0.20	0.38	0.81	0.27	0.62
12	0.71	0.64	0.25	0.05	0.51	0.15	0.32	0.60	0.08	0.44
Average	1.16	1.03	0.55	0.73	1.02	0.57	0.73	1.10	0.73	0.91
<b>Annual inflation four quarters ahead</b>										
Steps										
1	1.51	1.06	0.88	0.94	0.92	0.92	0.84	1.14	0.88	0.99
2	1.55	1.07	0.81	0.89	0.92	0.86	0.80	1.17	0.83	1.00
3	1.55	1.09	0.76	0.86	0.91	0.81	0.79	1.18	0.79	1.01
4	1.56	1.10	0.72	0.83	0.91	0.77	0.76	1.19	0.74	1.02
5	1.53	1.12	0.70	0.82	0.90	0.73	0.75	1.17	0.72	1.02
6	1.49	1.13	0.67	0.79	0.88	0.68	0.72	1.15	0.67	1.01
7	1.46	1.13	0.66	0.77	0.86	0.65	0.71	1.14	0.65	1.00
8	1.42	1.13	0.63	0.74	0.84	0.59	0.68	1.12	0.60	0.99
9	1.39	1.13	0.60	0.71	0.82	0.55	0.66	1.11	0.56	0.99
10	1.39	1.14	0.57	0.67	0.80	0.48	0.64	1.10	0.50	0.99
11	1.40	1.15	0.52	0.64	0.78	0.41	0.61	1.11	0.44	1.00
12	1.42	1.17	0.52	0.60	0.75	0.38	0.60	1.11	0.37	1.00
Average	1.47	1.12	0.67	0.77	0.86	0.65	0.71	1.14	0.65	1.00

Note: See footnote to Table 1 for definition of the method abbreviations.

1/ The inflation regression includes lags of inflation, output gaps, oil price inflation, and change in the output gap as explanatory variables.

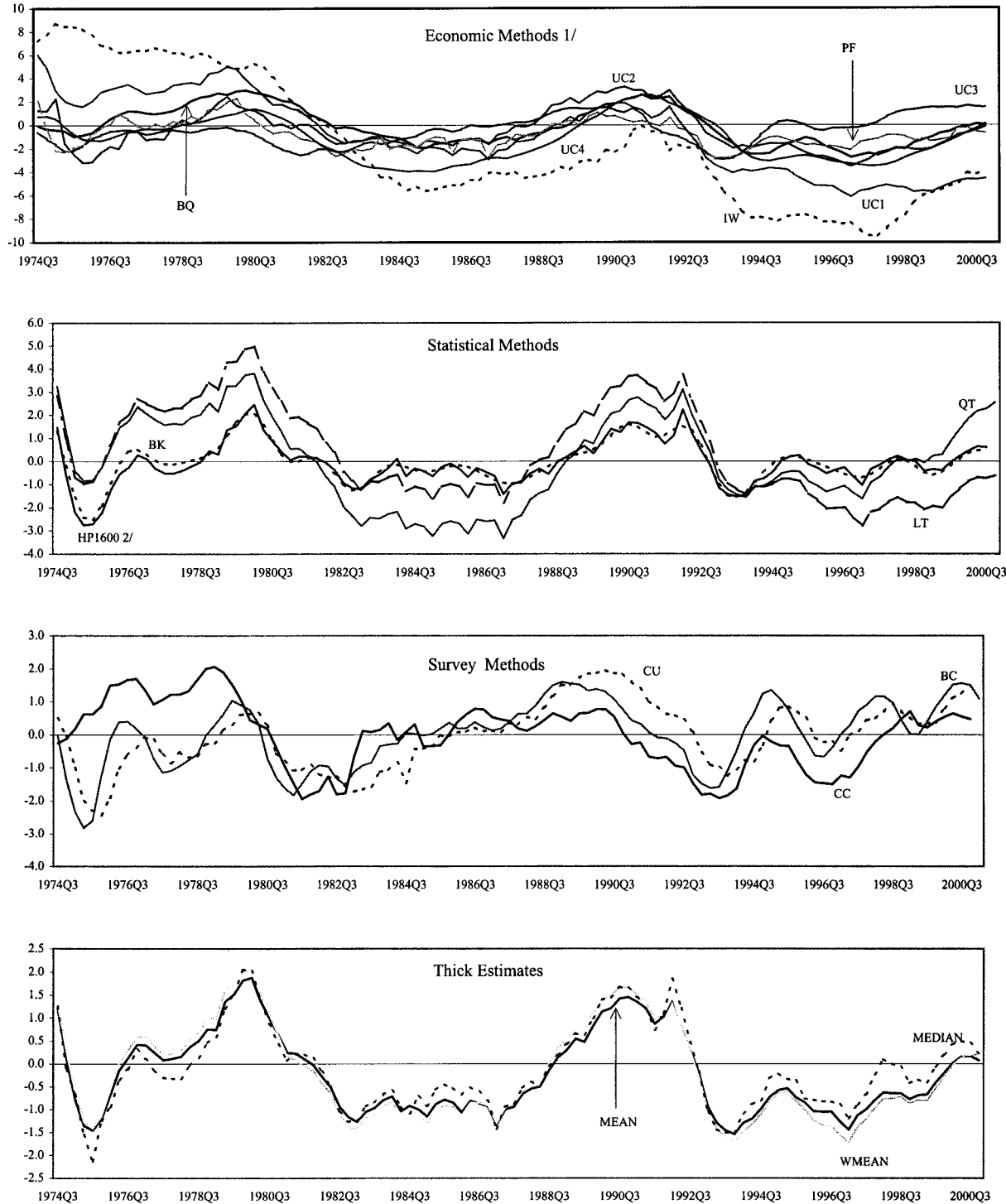
Table 6. Theil U Statistics from Philips Curve Forecasting Exercise Using Equation 10c (continued) 1/

	Statistical Methods				Survey Methods			Thick Modeling		
	HP893	HP3137	HPA1600	BK	BC	CC	CU	MEAN	WMEAN	MEDIAN
<b>Quarterly inflation changes</b>										
Steps										
1	0.81	0.82	0.83	0.84	0.86	0.82	0.83	0.80	0.80	0.82
2	0.71	0.73	0.74	0.71	0.79	0.69	0.74	0.69	0.69	0.70
3	0.70	0.73	0.72	0.68	0.76	0.67	0.71	0.66	0.66	0.67
4	1.10	1.16	1.13	1.07	1.19	1.08	1.10	1.02	1.04	1.09
5	0.77	0.80	0.79	0.78	0.82	0.76	0.78	0.72	0.73	0.75
6	0.58	0.62	0.62	0.61	0.64	0.59	0.61	0.55	0.55	0.57
7	0.53	0.58	0.56	0.55	0.57	0.54	0.54	0.48	0.48	0.51
8	0.65	0.70	0.68	0.73	0.70	0.71	0.66	0.63	0.63	0.67
9	0.65	0.68	0.68	0.70	0.67	0.70	0.65	0.61	0.62	0.65
10	0.46	0.50	0.50	0.50	0.47	0.50	0.45	0.44	0.44	0.46
11	0.35	0.40	0.38	0.41	0.35	0.43	0.36	0.35	0.35	0.36
12	0.70	0.71	0.70	0.88	0.57	0.98	0.74	0.70	0.74	0.79
Average	0.67	0.70	0.69	0.70	0.70	0.71	0.68	0.64	0.64	0.67
<b>Annual inflation changes</b>										
Steps										
1	0.90	0.96	0.94	0.95	1.05	0.91	0.99	0.87	0.85	0.90
2	0.91	1.01	0.97	0.94	1.16	0.92	1.04	0.87	0.84	0.84
3	0.92	1.05	1.00	0.96	1.22	0.92	1.06	0.88	0.85	0.84
4	0.93	1.06	1.01	0.98	1.23	0.92	1.07	0.88	0.85	0.85
5	0.94	1.09	1.03	1.00	1.24	0.94	1.10	0.88	0.85	0.84
6	0.95	1.12	1.06	1.03	1.26	0.95	1.12	0.90	0.86	0.85
7	0.96	1.14	1.08	1.05	1.26	0.98	1.15	0.91	0.87	0.85
8	0.96	1.15	1.09	1.09	1.22	1.05	1.15	0.93	0.88	0.84
9	0.96	1.18	1.11	1.14	1.20	1.14	1.13	0.95	0.90	0.83
10	0.95	1.17	1.10	1.14	1.17	1.19	1.11	0.95	0.89	0.82
11	0.91	1.12	1.05	1.10	1.12	1.18	1.06	0.91	0.86	0.79
12	0.89	1.14	1.06	1.10	1.12	1.27	1.04	0.94	0.87	0.73
Average	0.93	1.10	1.04	1.04	1.19	1.03	1.09	0.91	0.86	0.83
<b>Change in annual inflation four quarters ahead</b>										
Steps										
1	1.13	1.12	1.13	1.20	0.98	1.18	1.11	1.25	1.22	1.16
2	1.16	1.15	1.16	1.17	0.95	1.13	1.05	1.28	1.24	1.16
3	1.14	1.13	1.15	1.15	0.89	1.10	0.99	1.25	1.22	1.15
4	1.07	1.08	1.08	1.09	0.83	1.03	0.92	1.17	1.14	1.08
5	1.02	1.03	1.03	1.04	0.76	0.97	0.86	1.10	1.07	1.03
6	0.97	1.00	1.00	1.02	0.70	0.93	0.80	1.05	1.03	1.01
7	0.89	0.93	0.92	0.96	0.62	0.85	0.74	0.96	0.94	0.94
8	0.85	0.91	0.89	0.93	0.56	0.78	0.69	0.92	0.90	0.92
9	0.79	0.88	0.84	0.87	0.50	0.72	0.63	0.86	0.85	0.86
10	0.68	0.77	0.73	0.75	0.42	0.62	0.56	0.74	0.73	0.75
11	0.56	0.70	0.65	0.62	0.28	0.50	0.48	0.64	0.64	0.62
12	0.34	0.49	0.47	0.29	0.13	0.34	0.18	0.42	0.46	0.44
Average	0.88	0.93	0.92	0.92	0.64	0.85	0.75	0.97	0.95	0.93
<b>Annual inflation four quarters ahead</b>										
Steps										
1	0.98	1.00	1.00	1.06	0.99	0.91	1.06	0.99	0.97	0.96
2	0.98	1.02	1.02	1.04	0.97	0.83	1.04	0.99	0.97	0.98
3	0.99	1.04	1.03	1.06	0.96	0.81	1.03	0.99	0.97	0.98
4	0.99	1.05	1.04	1.06	0.97	0.79	1.04	0.98	0.97	0.98
5	0.98	1.06	1.04	1.07	0.97	0.77	1.04	0.96	0.95	0.99
6	0.97	1.06	1.03	1.07	0.97	0.74	1.03	0.94	0.93	0.98
7	0.96	1.05	1.03	1.07	0.97	0.73	1.04	0.92	0.92	0.97
8	0.95	1.05	1.02	1.06	0.97	0.69	1.05	0.90	0.90	0.96
9	0.94	1.06	1.02	1.05	0.97	0.67	1.06	0.88	0.88	0.95
10	0.93	1.06	1.02	1.04	0.97	0.65	1.06	0.86	0.86	0.94
11	0.93	1.09	1.03	1.05	0.98	0.63	1.08	0.85	0.86	0.94
12	0.92	1.09	1.03	1.05	0.96	0.61	1.07	0.83	0.85	0.94
Average	0.96	1.05	1.02	1.06	0.97	0.74	1.05	0.93	0.92	0.97

Note: See footnote to Table 1 for definition of the method abbreviations.

1/ The inflation regression includes lags of inflation, output gaps, oil price inflation, and change in the output gap as explanatory variables.

Figure 1. Euro-Area Output Gaps

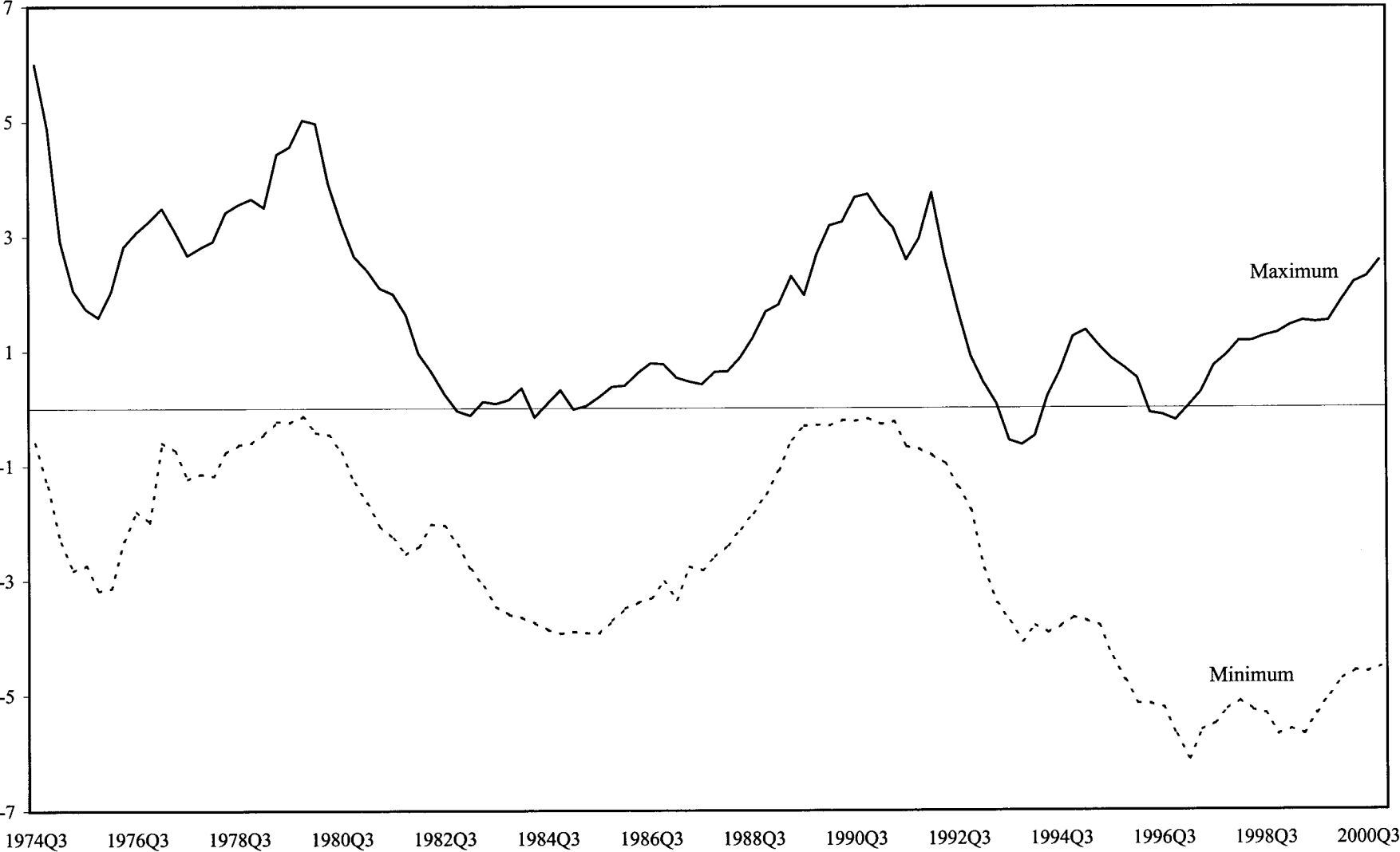


Note: See footnote to Table 1 for definitions of the model abbreviations.

1/ The inefficiency wedge has been scaled by a factor of 10.

2/ The HP893 and HP3137 are similar to the HP1600 and are not shown.

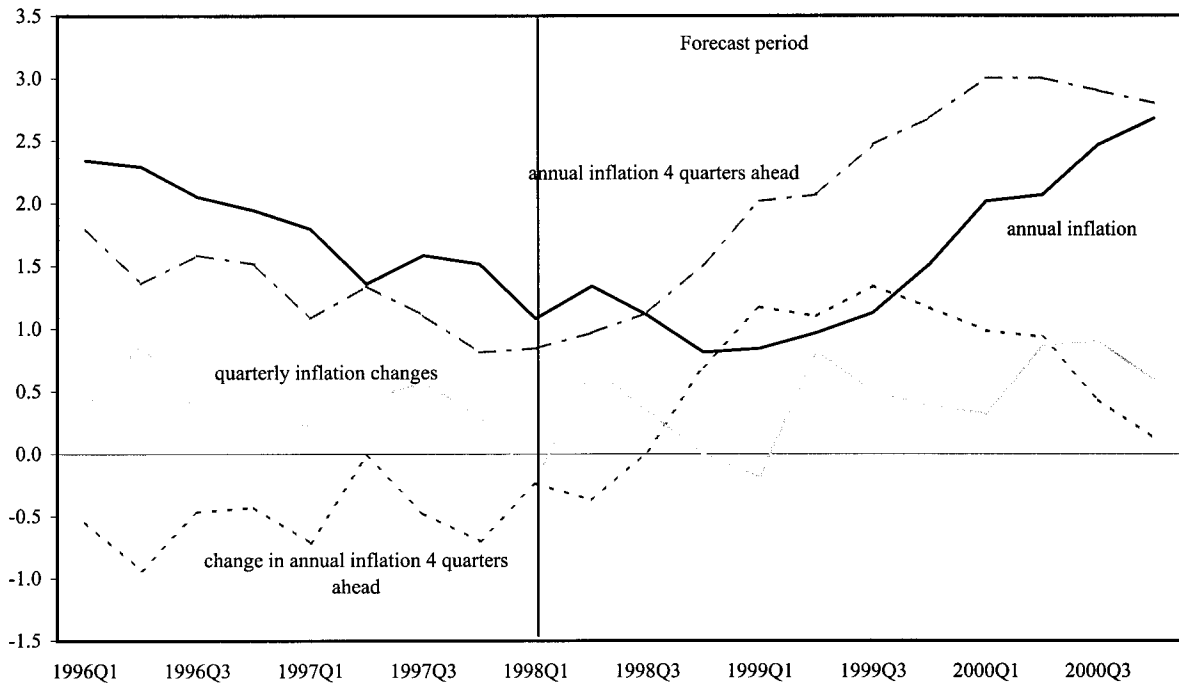
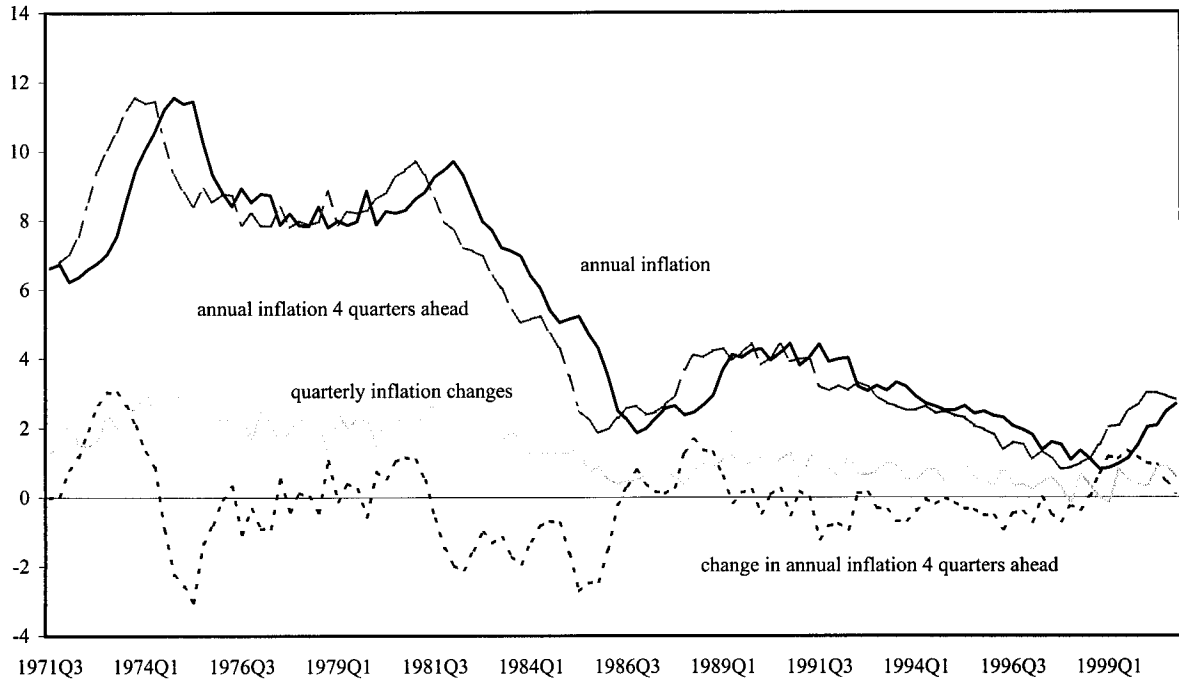
Figure 2. Minimum-Maximum Values Across Euro Area Output Gaps 1/



1/ The maximum (minimum) values have been calculated at each point in time across all 20 output gaps.

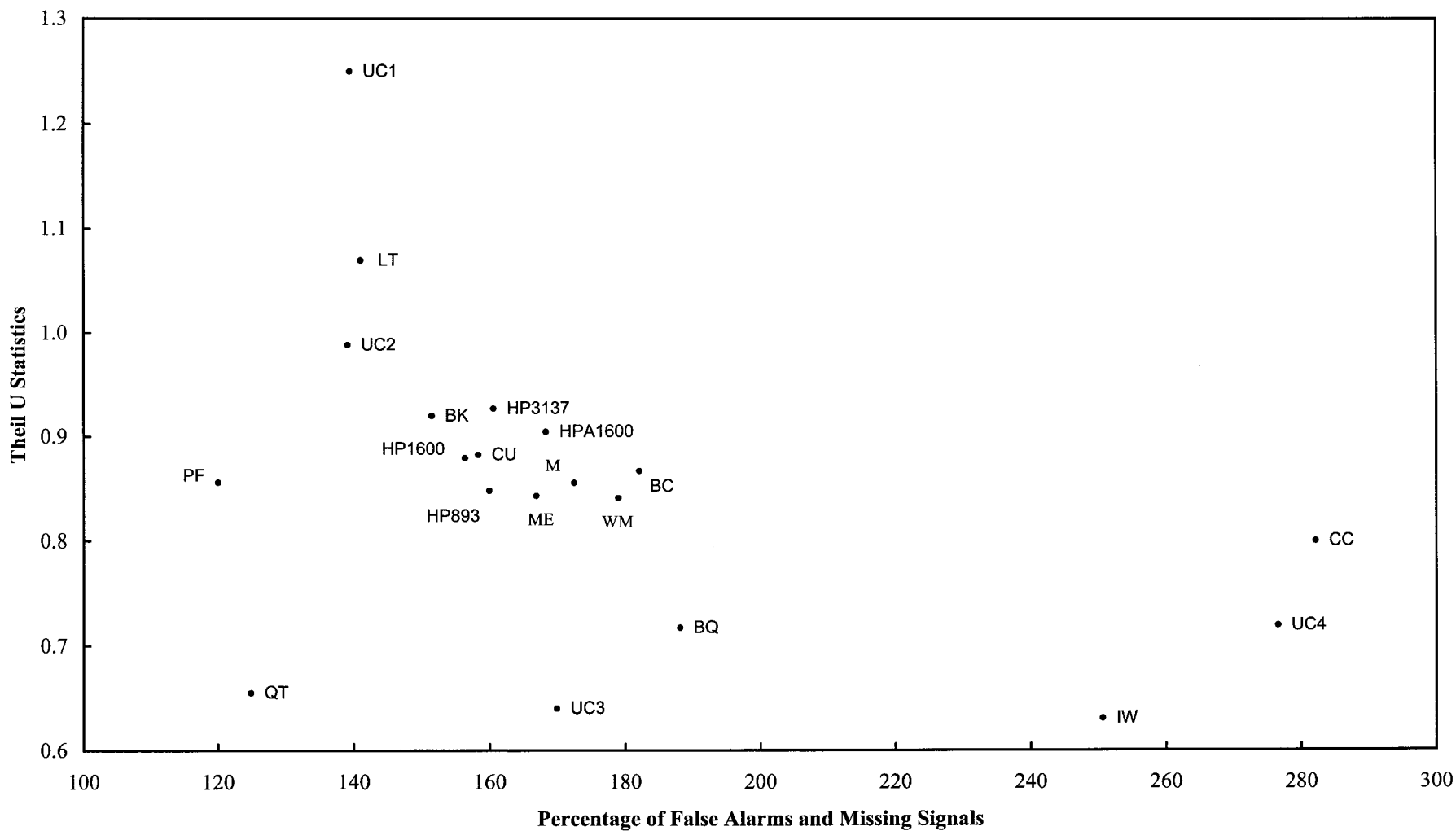


Figure 3. Inflation Series Used in the Forecasting Exercise



Source: Staff estimates.

Figure 4. Performance of Slack Measures under the Two Metrics 1/



Note: See footnote to Table 1 for definitions of the method abbreviations. Three abbreviations have been adjusted here to save space: (M) mean; (WM) weighted mean; and (ME) median.

## References

- Apel, M., and P. Jansson, 1999a, "System Estimates of Potential Output and the NAIRU", *Empirical Economics*, Vol. 24, pp. 373-88.
- , 1999b, "A Theory-Consistent System Approach for Estimating of Potential Output and the NAIRU", *Economic Letters*, Vol. 64, pp. 271-75.
- Artis, M., and Krolzig, H., and J. Toro, 1999, "The European Business Cycle," European University Institute, ECO Working Paper, No.99/24.
- Artis, M., and Kontolemis, Z., and D. Osborn, 1997, "Business Cycles for G7 and European Economies," *Journal of Business*, Vol. 70, pp. 249-79.
- Atkeson, A., and L. Ohanian, 2001, "Are Philips Curves Useful for Forecasting Inflation?," *Federal Reserve Bank of Minneapolis Quarterly Review*, No. 1, Vol. 25, pp. 2-11.
- Blanchard, O., and D. Quah, 1989, "The Dynamic Effects of Aggregate Demand and Supply Disturbances," *American Economic Review*, Vol.79, pp. 655-73.
- Baxter, M., and R. King, 1994, "Measuring Business Cycles: Approximate Band Pass Filters for Economic Time Series," University of Virginia, manuscript.
- Bry, G., and C. Boschan, 1971, "Cyclical Analysis of Time Series: Selected Procedures and Computer Programs," NBER Technical Working Paper 20.
- Camba-Mendez, and G. Rodriguez-Palenzuela, 2001, "Assessment of Criteria for Output Gap Estimates", Working Paper No. 54, European Central Bank.
- Canova, F., 1998, "Detrending and Business Cycle Facts," *Journal of Monetary Economics*, Vol.41, pp. 475-512.
- , 1999, "Does Detrending Matter for the Determination of the Reference Cycle and Selection of Turning Points," *Economic Journal*, Vol.109, pp.126-150.
- Cecchetti, S., R. Chu, and C. Steindel, 2000, "The Unreliability of Inflation Indicators," *Current Issues in Economics and Finance*, Vol. 6, pp.1-6, Federal Reserve Bank of New York.
- Clarida, R., M. Gertler, and J. Gali, 2000, "Monetary Policy Rules and Macroeconomic Stability: Evidence and Some Theory," *Quarterly Journal of Economics*, Vol. 115, pp. 147-80.
- Cogley, T., and J. Nason, 1995, "Effects of the Hodrick Prescott Filter on Trend and Difference Stationary Time Series: Implications for Business Cycle Research," *Journal of Economic Dynamics and Control*, January/February, Vol. 19, pp. 253-78.

- Economic Policy Committee, 2001, "Report on Potential Output and the Output Gap," October.  
European Central Bank, 2001, November Monthly Bulletin.
- Fagan, G., J. Henry, and R. Mestre, 2001, "An Area-Wide Model (AWM) for the Euro Area,"  
European Central Bank, Working Paper No. 42.
- Gali, J., M. Gertler, and J. David Lopez-Salido, "European Inflation Dynamics," NBER  
Working Paper No. 8218.
- Gerlach, S., and F. Smets, 1999, "Output Gaps and Monetary Policy in the EMU Area",  
European Economic Review, Vol. 43:(4-6): pp. 801-12.
- Gordon, R. J., 1997, "The Time-Varying Nairu and its Implications for Economic Policy",  
Journal of Economic Perspectives," Vol. 11, pp. 11-32.
- Goodfriend, M., and R. King, 1997, "The New Neoclassical Synthesis and the Role of  
Monetary Policy," NBER Macroeconomics Annual Vol.; 12, pp. 231-283.
- Granger, C., 2000, "Thick Modeling," UCSD mimeo.
- Hamilton, J., 1989, "A New Approach to the Economic Analysis of Non-Stationary Time Series  
and the Business Cycle," Econometrica, Vol. 57, pp. 357-384.
- Harvey, A. C., 1991, "Forecasting Structural Time Series Models and the Kalman Filter",  
Cambridge University Press, Cambridge, U.K.
- Harvey, A. C., and A. Jaeger, 1993, "Detrending, Stylized Facts and the Business Cycle,"  
Journal of Applied Econometrics, Vol. 8, pp. 231-47.
- Jaeger, A., and M. Parkinson, 1994, "Some Evidence on Hysteresis in Unemployment Rates,"  
European Economic Review, Vol.38, pp. 329-342.
- Lown, C., and R. Rich, 1997, "Is there an Inflation Puzzle?," Federal Reserve Bank of  
New York Economic Policy Review, December, pp. 51-69.
- Maravall, A., 1996, "Programs TRAMO and SEATS: Instructions for Users" , Bank of Spain  
Working Paper.
- Maravall, A., and R. Kaiser, 1999, "Estimation of the Business Cycle: A Modified Hodrick-  
Prescott Filter," Bank of Spain, Working Paper No. 9912, pp. 1-41.
- Marcet, A., and M. Ravn, 2001, "The HP-Filter in Cross-Country Comparisons," CEPR  
Working Paper.

- Martins, M., 2001, "Trend and Cycle in the Euro Area: New Tests and Estimates from an Unobserved Components Model", Paper presented at the ECOMOD Conference "Policy Modeling for European and Global Issues", Brussels, July 5-7, Revised version: September.
- McMorrow, K., and W. Roeger, 2001, "Potential Output: Measurement Methods, "New" Economy Influences and Scenarios for 2001-2010-A Comparison of the EU15 and the U.S.," EC Working Paper No. 150, April.
- Orphanides, A., and S. Van Norden, 1999, "The Reliability of Output Gap Estimates in Real Time," Working Paper, Board of Governors of the Federal Reserve System, Washington.
- Ross, K., 2001, "Estimating Potential Output, Output Gaps, and the Nairu for the Euro Area," IMF mimeo.
- Scacciavillani, F., and P. Swagel, 1999, "Measures of Potential Output: An Application to Israel," IMF Working Paper WP/99/96.
- Staiger, D., Stock, J. and M. Watson, 1997, "The Nairu, Unemployment and Monetary Policy," *Journal of Economic Perspectives*, Vol. 11, No.1, pp. 33-49.
- Svensson, L., 1999, "Price Level Targeting Versus Inflation Targeting: A Free Lunch?", *Journal of Money Credit and Banking*, Vol. 31, pp. 277-295.
- Watson, M., 1986, "Univariate Detrending Methods with Stochastic Trends", *Journal of Monetary Economics*, Vol. 18, No. 1, pp. 49-75.
- Zellner, A., and C. Hong, 1991, "Bayesian Methods for Forecasting Economic Time Series: Sensitivity of Forecasts to Asymmetry of Loss Structures," in Lahiri and Moore, pp. 129-40.