



DATA FOR DECISIONS

Phase II

MULTI-PARTNER TRUST FUND

CAPACITY DEVELOPMENT








STATISTICS



D4D-II OBJECTIVES

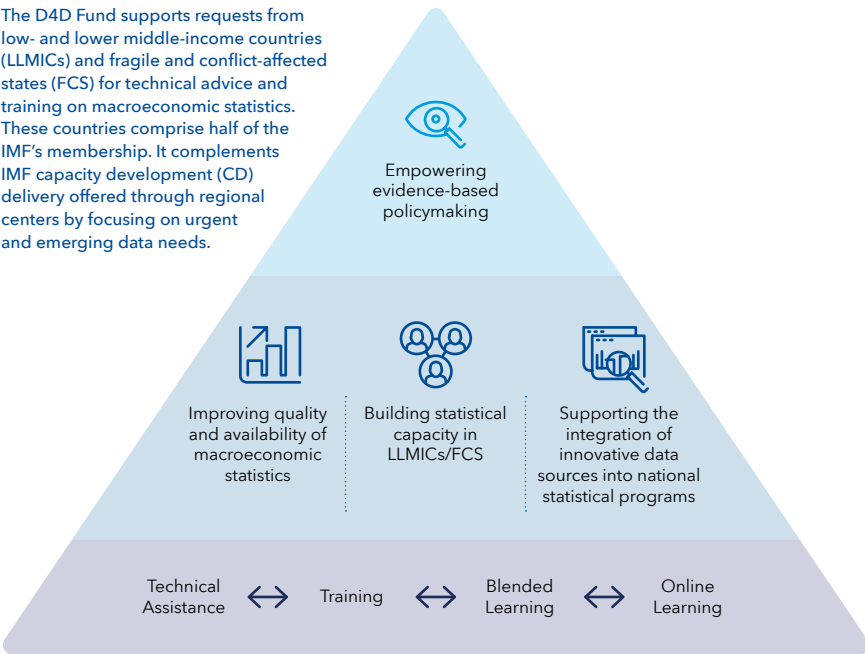
The D4D Fund helps countries build strong national statistical systems to drive evidence-based policymaking. Partnerships are crucial for our efforts.

D4D Fund Objectives by Module

| M1 | M2 | M3 | M4 | M5 |
|--|---|--|---|---|
|  |  |  |  |  |
| ACCESS better and more data to empower policymaking and enhance public transparency and accountability. | SUPPORT financial inclusion policymaking in the face of evolving financial services and needs. | EXPAND global reach of statistics training through a structured online learning curriculum. | STRENGTHEN data transparency, by supporting countries to adopt the IMF Data Standards Initiatives. | BUILD select macro-relevant environmental and climate change statistics. |

DELIVERY FOR IMPACT

The D4D Fund supports requests from low- and lower middle-income countries (LLMICs) and fragile and conflict-affected states (FCS) for technical advice and training on macroeconomic statistics. These countries comprise half of the IMF’s membership. It complements IMF capacity development (CD) delivery offered through regional centers by focusing on urgent and emerging data needs.



D4D-II STRUCTURE

ESTIMATED BUDGET
PHASE II - \$45M

| | |
|-----------|--|
| Module M1 | ADDRESSING DATA NEEDS TO EMPOWER POLICYMAKING |
| | Fiscal and Public Debt Statistics |
| | Government Finance Statistics |
| | Public Sector Debt Statistics |
| | External Sector Statistics |
| | Balance of Payments /International Investment Position |
| | External Debt |
| | Reserves Data Template and Investment Statistics |
| | Real Sector Statistics |
| | High-Frequency Indicators |
| | Source Data and Intermediate Statistics |
| | Prices |
| Module M2 | FINANCIAL ACCESS SURVEY |
| Module M3 | ONLINE LEARNING |
| Module M4 | DATA DISSEMINATION AND USE |
| | Data Standards |
| | SDMX |
| | Data Use |
| Module M5 | ENVIRONMENTAL AND CLIMATE CHANGE STATISTICS |
| | Air Emissions and/or Energy Accounts |
| | Physical and/or Transition Risk Indicators |
| | Climate Expenditures, Subsidies and Finance |

D4D-II: INTEGRATING NEW AREAS



Environmental and Climate Change Statistics

D4D-II will assist countries in developing policy-relevant environmental and climate change statistics through a CD program targeted to countries' specific climate challenges and national priorities.



Data Standards

D4D-II will further global efforts to enhance transparency and public accountability by modernizing and widening data access driven by the IMF's data standards.



Big Data

D4D-II will support countries in integrating innovative data sources—including Big Data—into their national statistical programs as they move toward an ecosystem of data and statistics that is better able to meet evolving data needs.

Comparative Advantages of the D4D Fund



RESPONDING QUICKLY

to emerging data needs and adapting delivery modalities to best support the CD needs of country authorities.



ALIGNING STATISTICS CD DELIVERY

with data needed to support IMF surveillance and lending activities; and coordinating D4D-funded CD planning and delivery with STA field operations and the activities of other development partners.



DESIGNING and IMPLEMENTING

projects that factor in a country's needs, absorptive capacity, and pace of reform.

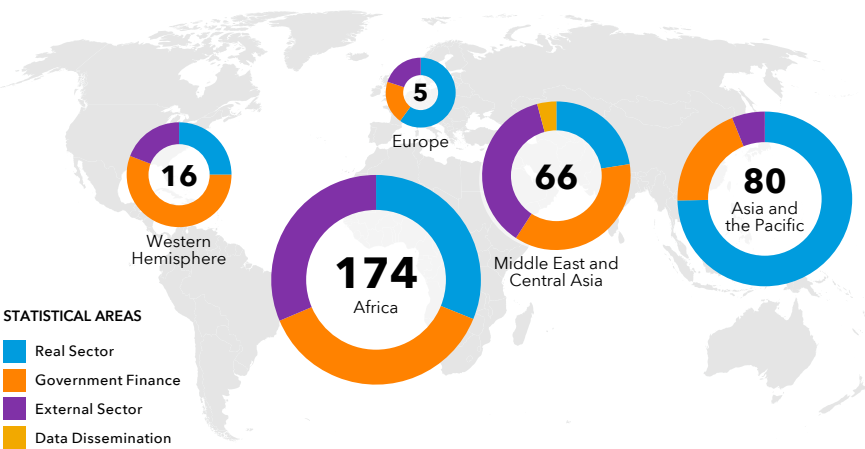


DELIVERING CD

with clear outcomes and milestones to achieve sustainable and effective results.

D4D-I ENGAGEMENTS

341 technical assistance activities benefiting
80 countries



NEW DATA: SNAPSHOT OF D4D-I IMPACT

Filling a Data Gap on Residential Property Prices

| | | |
|--|--|---|
| | ARMENIA CAMBODIA JORDAN | New Residential Property Indexes which help central banks monitor financial sector vulnerabilities in the real estate sector. |
|--|--|---|

Strengthening Foreign Assets and Liability Positions Data

| | | |
|--|--------------------------|--|
| | GAMBIA | International Investment Position which facilitates deeper analysis of external vulnerabilities. |
| | ANGOLA RWANDA | Monthly international reserves and foreign currency liquidity to monitor external sector developments and drive decisions. |

Enhancing Fiscal Data Transparency

| | | |
|--|----------------|--|
| | GEORGIA | Comprehensive sectorization of State-Owned Enterprises in government finance statistics (GFS). |
| | YEMEN | GFS and public sector debt statistics (PSDS) to support fiscal policy decisions. |

D4D-I Funding Partners



ONLINE LEARNING



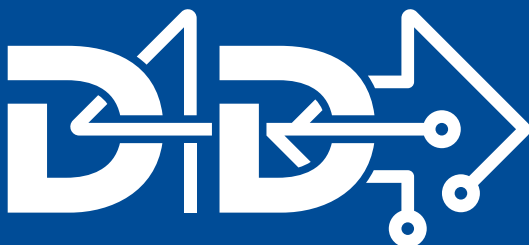
Over **13,500** participants



9 courses totaling
70 offerings



3 languages
(English/French/Spanish)



DATA FOR DECISIONS

- Quality
- Innovation
- Management
- Use
- Policymaking
- Transparency
- Accountability



Learn more about D4D

CONTACT US

✉ statistics@IMF.org

🔗 IMF.org/Capacity-Development/D4D

📍 1900 Pennsylvania Avenue NW,
Washington, DC 20431