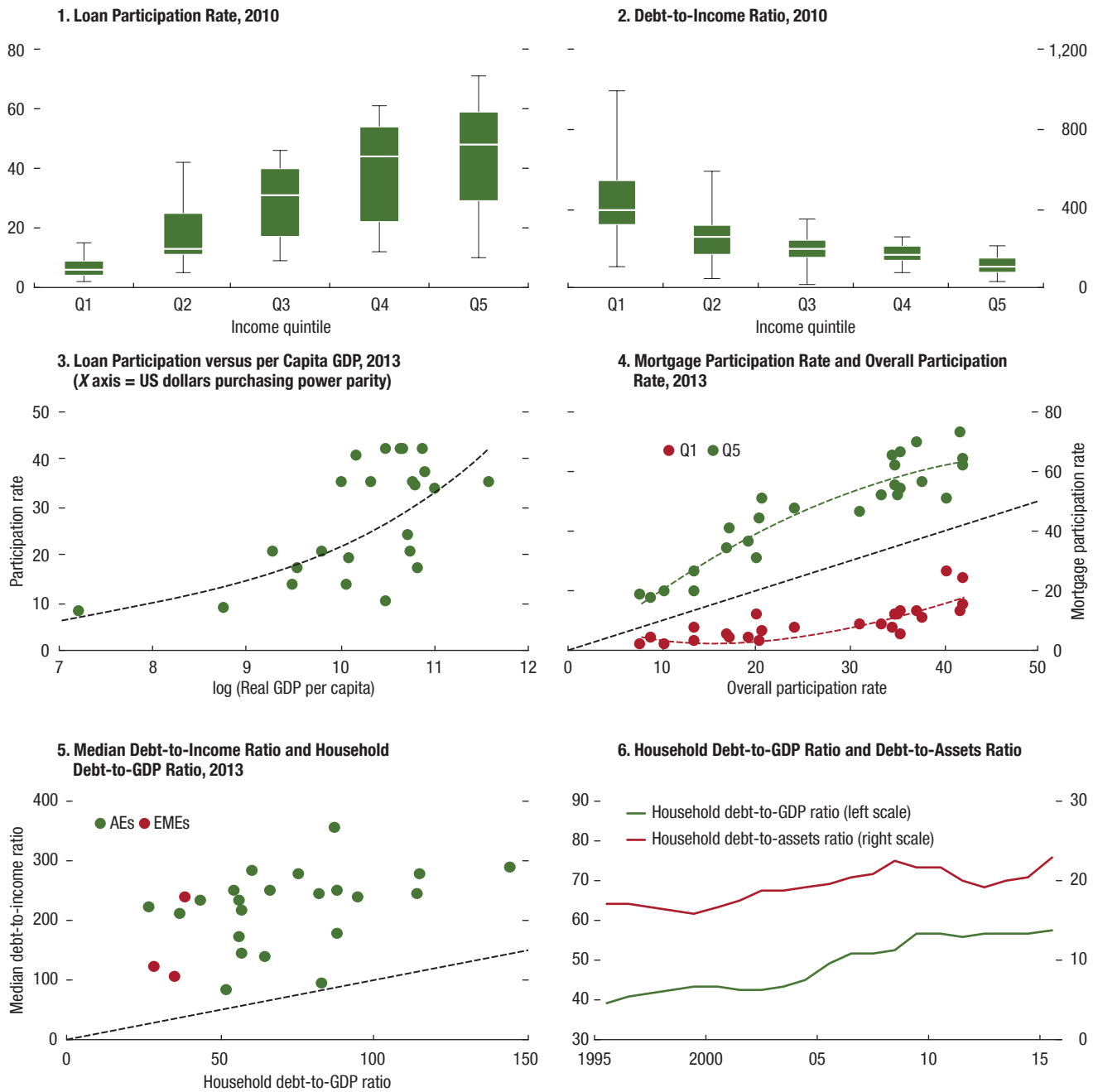


**Figure 2.4. Household Debt: Evidence from Cross-Country Panel Data**  
*(Percent, unless noted otherwise)*



Sources: Bank for International Settlements; country panel surveys; Euro Area Housing Finance Network; Luxembourg Wealth Study; Organisation for Economic Co-operation and Development (OECD); US Survey of Consumer Finance; and IMF staff calculations.  
 Note: Panels 1 and 2 show the cross-country dispersion across income quintiles, evaluated at the median for mortgage borrowers (quintile 1 to quintile 5, from lowest to highest income). Dashed lines in panels 4 and 5 denote the 45-degree line. For country coverage, see Annex 2.1. Panel 6 shows debt, asset, and wealth ratios for a subsample of 18 OECD countries for which such data are available since 1995. AEs = advanced economies; EMEs = emerging market economies.