



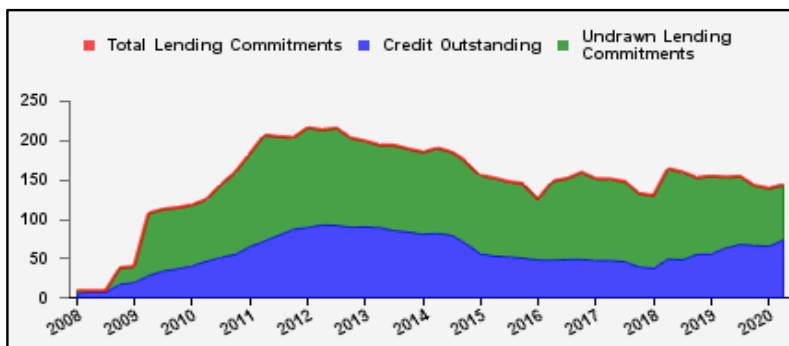
Weekly Report on Key Financial Statistics

Table 1. Key Indicators 1/

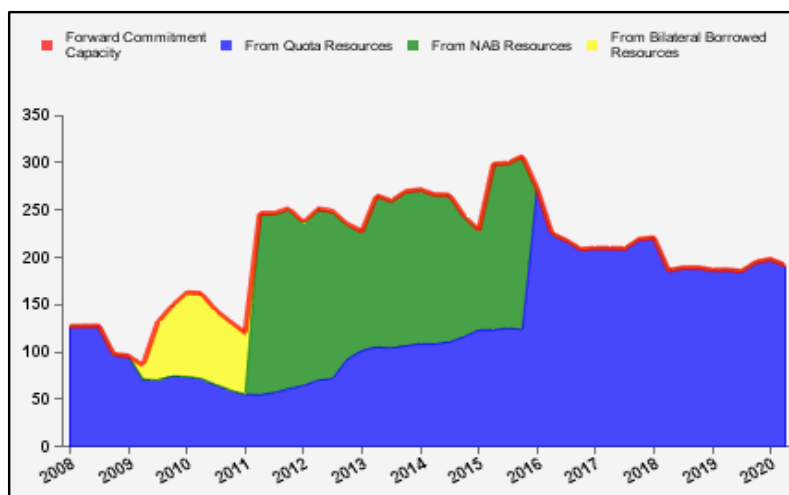
as of May 01, 2020

(In billions of SDRs, unless indicated otherwise)

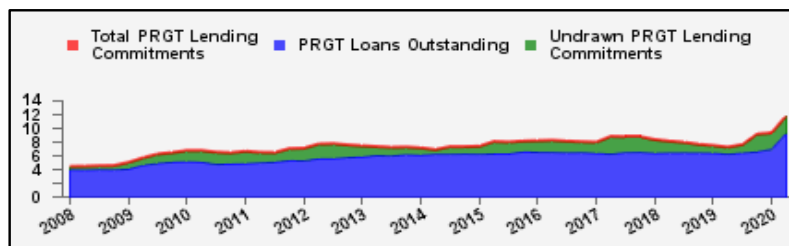
GRA Lending and Resources	SDR	USD
I. Total Lending Commitments, of which:	144.9	198.4
Undrawn Lending Commitments	70.9	97.1
Credit Outstanding	74.0	101.4
II. Forward Commitment Capacity (FCC)	191.9	262.7
III. Unactivated Borrowed Resources, of which: 2/	384.5	526.4
NAB	134.1	183.6
Bilateral Borrowing Agreements	250.4	342.8
IV. Total GRA Resources (I. + II. + III.)	721.3	987.6



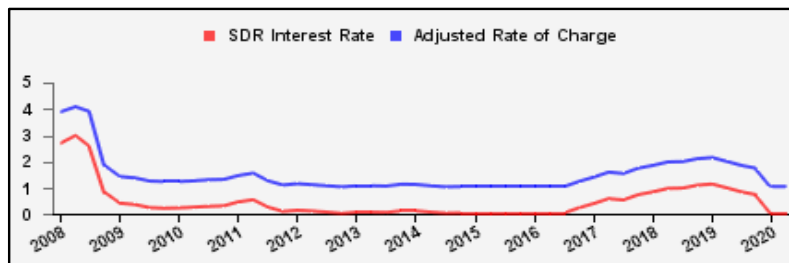
Forward Commitment Capacity (FCC)	SDR	USD
I. Usable resources (a) + (b)	341.3	467.4
(a) Fund quota resources	341.3	467.4
(b) Fund borrowed resources	--	--
II. Undrawn balances under GRA lending commitments	70.9	97.1
Precautionary 3/	52.7	72.1
Non-precautionary	18.2	24.9
III. Uncommitted usable resources (I - II)	270.5	370.3
IV. Repurchases one-year forward	3.2	4.3
V. Repayments of borrowed resources one-year forward	1.7	2.4
VI. Prudential balance	80.0	109.6
VII. Forward commitment capacity (III + IV - V - VI) 4/	191.9	262.7
(a) From Quota resources	191.9	262.7
(b) From NAB resources	--	--
(c) From Bilateral Borrowed resources	--	--



PRGT Lending and Resources	SDR	USD
I. Total Lending Commitments, of which:	11.9	16.3
Ia. Undrawn lending commitments	2.6	3.5
Ib. Loans Outstanding	9.3	12.7
II. Undrawn Loan Resources	11.0	15.1
III. Uncommitted Loan Resources (II. - Ia.)	8.4	11.5



Rates	Percent
1 SDR = USD	1.36928
SDR Interest Rate	0.050
Adjusted Rate of Charge	1.050
Adjusted Rate of Remuneration	0.050



1/ -- Indicates zero value, zero indicates amounts less than SDR 0.05 billion. Totals may not add due to rounding.

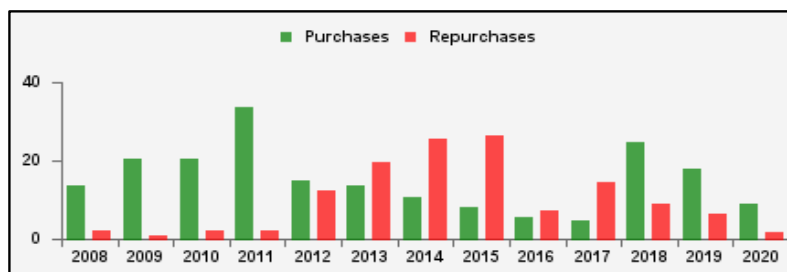
2/ Excludes 20% prudential balance and borrowing lines of participants/members that are currently not in the FTP; for the NAB, also excludes borrowing lines of participants that have not yet adhered to the NAB as well as any outstanding NAB claims and undrawn committed resources under current NAB-eligible arrangements.

3/ Undrawn balances under arrangements treated as precautionary by the authorities.

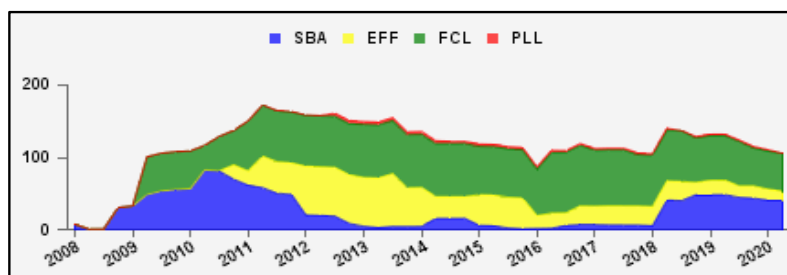
4/ Does not include the Bilateral Borrowing Agreements (activated only if the modified FCC is below SDR 100 billion).

Table 2a. Use of GRA Resources 1/
as of May 01, 2020
(In billions of SDRs, unless indicated otherwise)

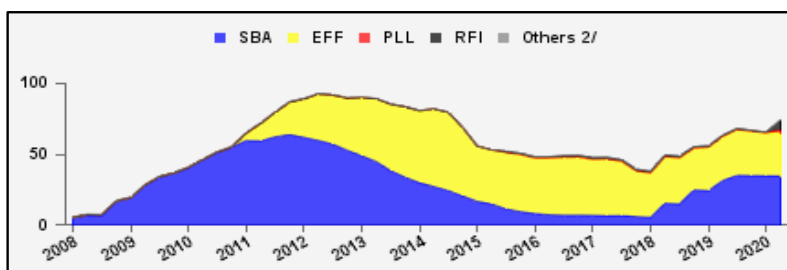
GRA Lending (Calendar year to date)	SDR	USD
Purchases	8.9	12.2
Financed by Quota Resources	8.9	12.2
Financed by Borrowings	--	--
Repurchases	1.8	2.5
Commitments Approved	17.4	23.8



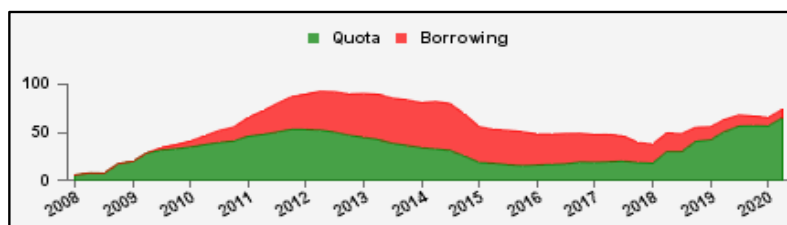
Commitments Under Current GRA Arrangements	Number of	SDR	USD
Standby Arrangement (SBA)	3	41.0	56.2
Extended Fund Facility (EFF)	12	12.4	16.9
Flexible Credit Line (FCL)	2	52.4	71.8
Precautionary and Liquidity Line (PLL)	--	--	--
Total Current Arrangements	17	105.8	144.9



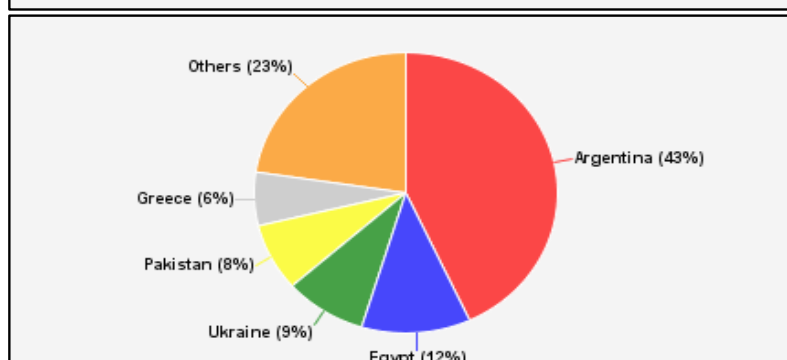
Credit Outstanding by Facility	SDR	USD
Standby Arrangement (SBA)	34.6	47.4
Extended Fund Facility (EFF)	30.4	41.7
Flexible Credit Line (FCL)	--	--
Precautionary and Liquidity Line (PLL)	2.2	2.9
Rapid Financing Instrument (RFI)	6.9	9.4
Others 2/	--	--
Total Credit Outstanding	74.0	101.4



Credit Outstanding by Financing Sources	SDR	USD
Financed by Quota Resources	65.1	89.2
Financed by Borrowings	8.9	12.2
Total Credit Outstanding	74.0	101.4



Largest 5 Exposures 3/	Credit Outstanding	
	SDR	As a % of quota
Argentina	31.9	1,001
Egypt	8.6	422
Ukraine	6.5	323
Pakistan	5.7	282
Greece	4.6	188



1/ -- Indicates zero value, zero indicates amounts less than SDR 0.05 billion. Totals may not add due to rounding.

2/ Includes outstanding credit under the former Compensatory Financing Facility; for the chart also includes outstanding credit under the former Emergency Post Conflict and Natural Disaster Assistance policy.

3/ Members with current arrangements are bolded.

Table 2b. Current Financial Arrangements (GRA)

as of May 1, 2020

(In millions of SDRs, unless indicated otherwise) 1/

Member	Amount Committed	Amount Undrawn	Amount Drawn	Credit Outstanding		Period of Arrangement	
				Amount 2/	As a % of Quota	Effective Date	Expiration Date
Standby Arrangement (3)	41,044	9,050	31,994	32,117			
Argentina	40,714	8,800	31,914	31,914	1,001	20-Jun-18	19-Jun-21
Armenia 3/	180	180	--	124	96	17-May-19	16-May-22
Honduras 3/	150	70	80	80	32	15-Jul-19	14-Jul-21
Extended Fund Facility (12)	12,372	7,702	4,669	10,459			
Angola	2,673	1,600	1,073	1,073	145	07-Dec-18	06-Dec-21
Barbados	208	103	105	105	111	01-Oct-18	30-Sep-22
Bosnia-Herzegovina	443	316	127	392	148	07-Sep-16	06-Sep-20
Cote d'Ivoire	563	129	434	867	133	12-Dec-16	11-Dec-20
Equatorial Guinea	205	176	29	29	19	18-Dec-19	17-Dec-22
Ethiopia	752	662	90	90	30	20-Dec-19	19-Dec-22
Gabon	464	89	375	483	224	19-Jun-17	18-Jun-20
Georgia	484	304	180	180	86	12-Apr-17	11-Apr-21
Jordan	926	823	103	397	116	25-Mar-20	24-Mar-24
Mongolia	315	157	157	157	217	24-May-17	23-May-20
Pakistan	4,268	3,224	1,044	5,733	282	03-Jul-19	02-Oct-22
Sri Lanka	1,071	119	952	952	165	03-Jun-16	02-Jun-20
Flexible Credit Line (2)	52,413	52,413	--	--			
Colombia 3/	7,850	7,850	--	--	--	01-May-20	30-Apr-22
Mexico 3/	44,564	44,564	--	--	--	22-Nov-19	21-Nov-21
Total Current GRA Arrangements (17)	105,828	69,165	36,663	42,576			
Memorandum Items:							
Credit outstanding from members without current arrangement and outright disbursements.				31,466			
Total Credit Outstanding.				74,041			

1/ -- Indicates zero value, zero indicates amounts less than SDR 0.5 million. Totals may not add due to rounding.

2/ Includes Credit Outstanding under expired arrangements and outright disbursements.

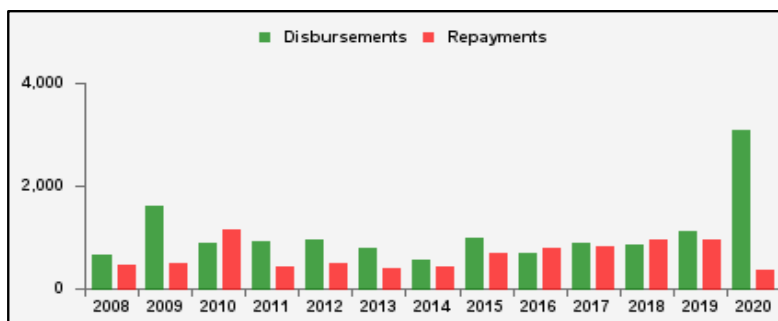
3/ The undrawn commitment of the arrangement is treated as precautionary by the authorities.

Table 3a. Use of Concessional PRGT Resources 1/

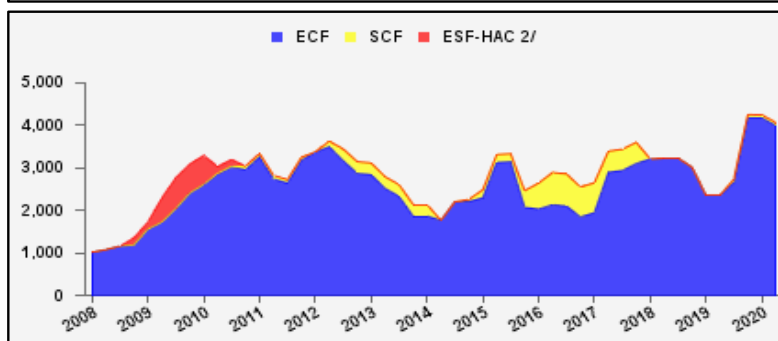
as of May 01, 2020

(In millions of SDRs, unless indicated otherwise)

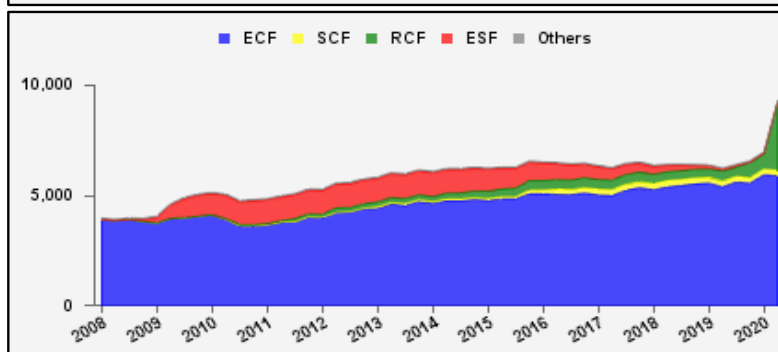
PRGT Lending (Calendar year to date)	SDR	USD
Disbursements	3,081.3	4,219.2
Repayments	369.0	505.3
Commitments Approved	3,174.4	4,346.6



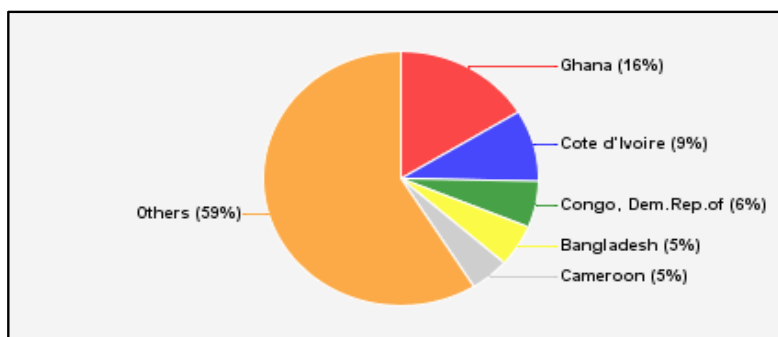
Commitments Under Current PRGT Arrangements	Number of	SDR	USD
Extended Credit Facility (ECF)	18	4,000.0	5,477.2
Standby Credit Facility (SCF)	1	74.9	102.6
Total Current Arrangements	19	4,075.0	5,579.8



Loans Outstanding by Facility	SDR	USD
Extended Credit Facility (ECF)	5,896.4	8,073.8
Standby Credit Facility (SCF)	244.0	334.1
Rapid Credit Facility (RCF)	3,094.3	4,237.0
(former) Exogenous Shocks Facility (ESF)	9.2	12.6
Others 3/	59.2	81.1
Total Loans Outstanding	9,303.1	12,738.6



Largest 5 Exposures 4/	Loans Outstanding	
	SDR	As a % of quota
Ghana	1,511.6	205
Cote d'Ivoire	845.3	130
Congo, Dem.Rep.of	547.8	51
Bangladesh	493.7	46
Cameroon	427.8	155



1/ -- Indicates zero value, zero indicates amounts less than SDR 0.05 million. Totals may not add due to rounding.

2/ The last commitment under the old ESF-HAC Facility expired on December 3, 2011.

3/ Includes outstanding and overdue loans under the (former) Structural Adjustment Facility and Trust Fund.

4/ Members with current arrangements are bolded.

Table 3b. Current Financial Arrangements (PRGT)
as of May 1, 2020
(In millions of SDRs, unless indicated otherwise) 1/

Member	Amount Committed	Amount Undrawn	Amount Drawn	Loans Outstanding		Period of Arrangement	
				Amount 2/	As a % of Quota	Effective Date	Expiration Date
Extended Credit Facility (18)	4,000	2,165	1,835	4,182			
Benin	111	16	96	122	99	07-Apr-17	31-Jul-20
Burkina Faso	108	36	72	240	200	14-Mar-18	13-Mar-21
Cameroon	483	55	428	428	155	26-Jun-17	25-Jun-20
Central African Rep.	84	72	12	196	176	20-Dec-19	19-Dec-22
Chad	224	28	196	370	264	30-Jun-17	30-Sep-20
Congo, Rep. of	324	292	32	33	21	11-Jul-19	10-Jul-22
Cote d'Ivoire	281	65	217	845	130	12-Dec-16	11-Dec-20
Ethiopia	1,203	1,069	134	138	46	20-Dec-19	19-Dec-22
Gambia	35	30	5	44	71	23-Mar-20	22-Jun-23
Guinea	120	34	86	236	110	11-Dec-17	10-Dec-20
Liberia	155	138	17	145	56	11-Dec-19	10-Dec-23
Malawi	106	52	54	169	121	30-Apr-18	29-Apr-21
Mali	140	100	40	244	131	28-Aug-19	27-Aug-22
Mauritania	116	33	83	208	162	06-Dec-17	05-Dec-20
Niger	118	14	104	274	208	23-Jan-17	31-Jul-20
Sao Tome-Principe	13	11	2	15	104	02-Oct-19	01-Feb-23
Sierra Leone	124	78	47	262	126	30-Nov-18	29-Jun-22
Somalia	253	42	211	211	129	25-Mar-20	24-Mar-23
Standby Credit Facility (1)	75	50	25	25			
Honduras 3/	75	50	25	25	10	15-Jul-19	14-Jul-21
Total Current PRGT Arrangements (19)	4,075	2,215	1,860	4,207			
Memorandum Items:							
Credit outstanding from members without current arrangement and outright loans.				5,096			
Total Credit Outstanding.				9,303			

1/ -- Indicates zero value, zero indicates amounts less than SDR 0.5 million. Totals may not add due to rounding.

2/ Includes Loans Outstanding under expired arrangements and outright loans.

3/ The undrawn commitment of the arrangement is treated as precautionary by the authorities.